



PRODUCT BROCHURE

MARCH 2022

WWW.NORICO.COM.AU

● BT33.01

RRP: \$229.00
Finish: Chrome



● BT33.02

RRP: \$259.00
Finish: Matte Black



● BT33.03

RRP: \$289.00
Finish: Matte Black & Chrome



● BT33.04

RRP: \$319.00
Finish: Brushed Yellow Gold



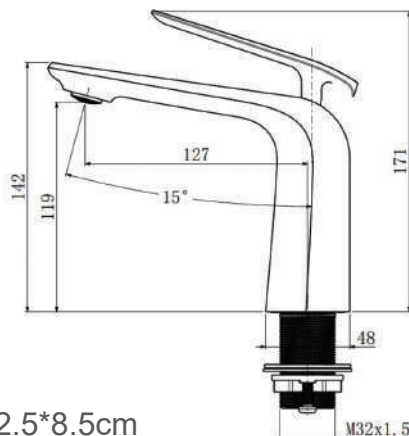
● BT33.05

RRP: \$289.00
Finish: Brushed Nickel



● BT33.06

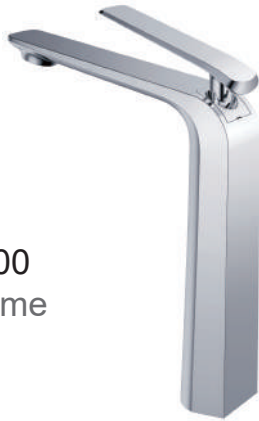
RRP: \$319.00
Finish: Gun Metal Grey



Feature:
Material: Brass
Weight: 1.8kg
Package Size: 30*22.5*8.5cm

● TBT35.01

RRP: \$279.00
Finish: Chrome



● TBT35.02

RRP: \$299.00
Finish: Matte Black



● TBT35.03

RRP: \$349.00
Finish: Matte Black
& Chrome



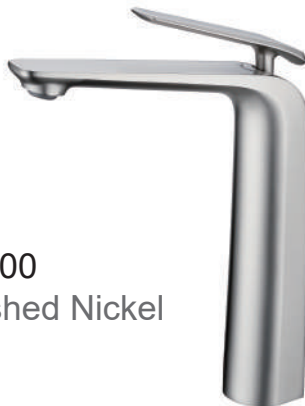
● TBT35.04

RRP: \$399.00
Finish: Brushed
Yellow Gold



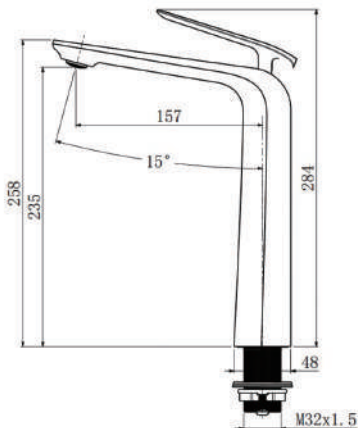
● TBT35.05

RRP: \$349.00
Finish: Brushed Nickel



● TBT35.06

RRP: \$399.00
Finish: Gun Metal Grey



Feature:
Material: Brass
Weight: 2.3kg
Package Size: 45.5*25*7.5cm

● KT33.01

RRP: \$279.00
Finish: Chrome



● KT33.02

RRP: \$329.00
Finish: Matte Black



● KT33.03

RRP: \$419.00
Finish: Matte Black&Chrome



● KT33.04

RRP: \$439.00
Finish: Brushed Yellow Gold



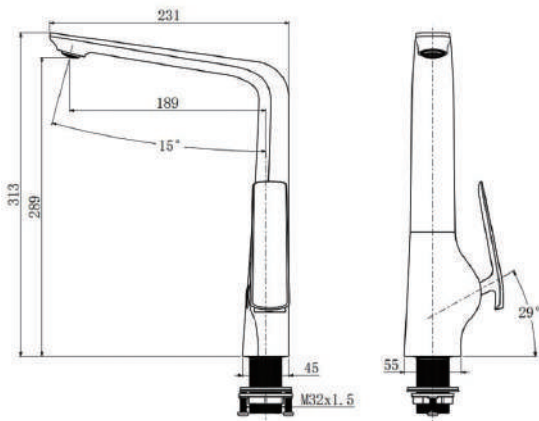
● KT33.05

RRP: \$419.00
Finish: Brushed Nickel



● KT33.06

RRP: \$439.00
Finish: Gun Metal Grey



Feature:
Material: Brass
Weight: 2.7kg
Package Size: 45*25*7.5cm



● WMT14.01

RRP: \$199.00
Finish: Chrome



● WMT14.02

RRP: \$229.00
Finish: Matte Black



● WMT14.03

RRP: \$279.00
Finish: Matte Black & Chrome



● WMT14.04

RRP: \$339.00
Finish: Brushed Yellow Gold



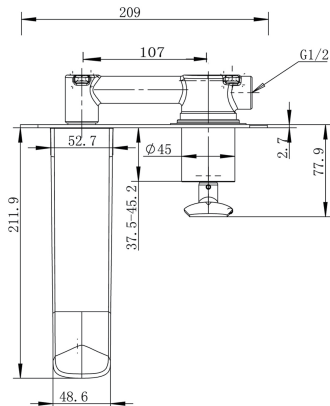
● WMT14.05

RRP: \$279.00
Finish: Brushed Nickel



● WMT14.06

RRP: \$339.00
Finish: Gun Metal Grey



Feature:
Material: Brass
Weight: 2.0kg
Package Size: 30.5*22.5*7.5cm

● WM46.01

RRP: \$129.00
Finish: Chrome



● WM46.02

RRP: \$149.00
Finish: Matte Black



● WM46.03

RRP: \$169.00
Finish: Matte Black & Chrome



● WM46.04

RRP: \$189.00
Finish: Brushed Yellow Gold



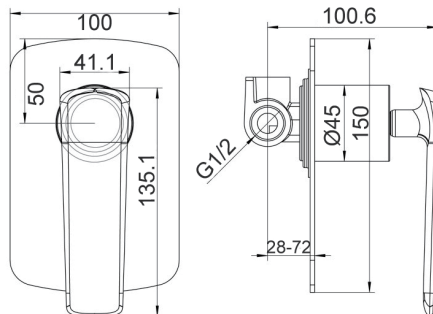
● WM46.05

RRP: \$169.00
Finish: Brushed Nickel



● WM46.06

RRP: \$189.00
Finish: Gun Metal Grey



Feature:
Material: Brass
Weight: 1.6kg
Package Size: 21.5*17.5*8.5cm

● WMD45.01

RRP: \$169.00
Finish: Chrome



● WMD45.02

RRP: \$189.00
Finish: Matte Black



● WMD45.03

RRP: \$229.00
Finish: Matte Black & Chrome



● WMD45.04

RRP: \$269.00
Finish: Brushed Yellow Gold



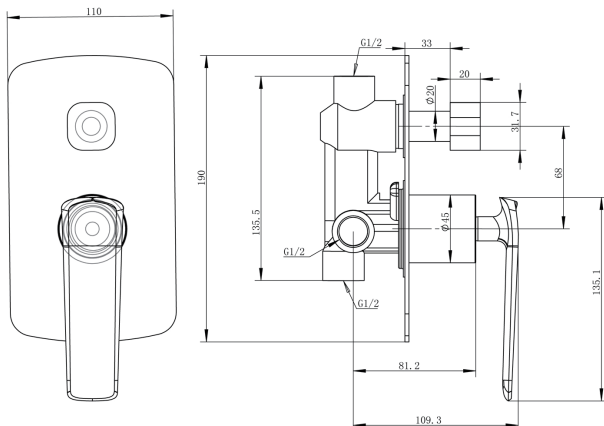
● WMD45.05

RRP: \$229.00
Finish: Brushed Nickel



● WMD45.06

RRP: \$269.00
Finish: Gun Metal Grey



Feature:
Material: Brass
Weight: 1.6kg
Package Size: 21.5*17.5*8.5cm



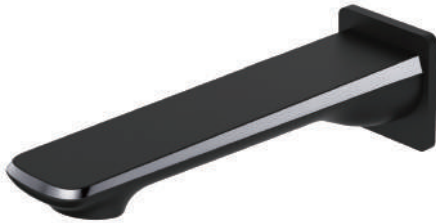
● SP10.01

RRP: \$79.00
Finish: Chrome



● SP10.02

RRP: \$89.00
Finish: Matte Black



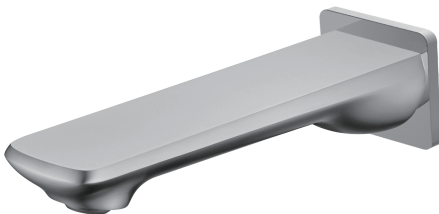
● SP10.03

RRP: \$119.00
Finish: Matte Black & Chrome



● SP10.04

RRP: \$129.00
Finish: Brushed Yellow Gold



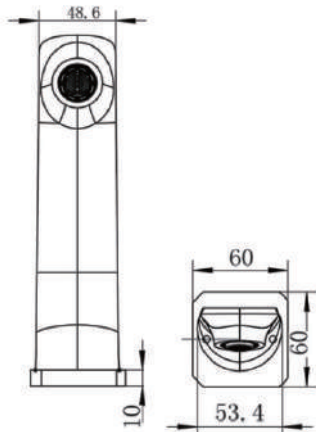
● SP10.05

RRP: \$119.00
Finish: Brushed Nickel



● SP10.06

RRP: \$129.00
Finish: Gun Metal Grey



Feature:
Material: Brass
Weight: 0.8kg
Package Size: 23*8*7cm



● SP05.01

RRP: \$99.00
Finish: Chrome



● SP05.02

RRP: \$129.00
Finish: Matte Black



● SP05.04

RRP: \$159.00
Finish: Brushed Yellow Gold



● SP05.05

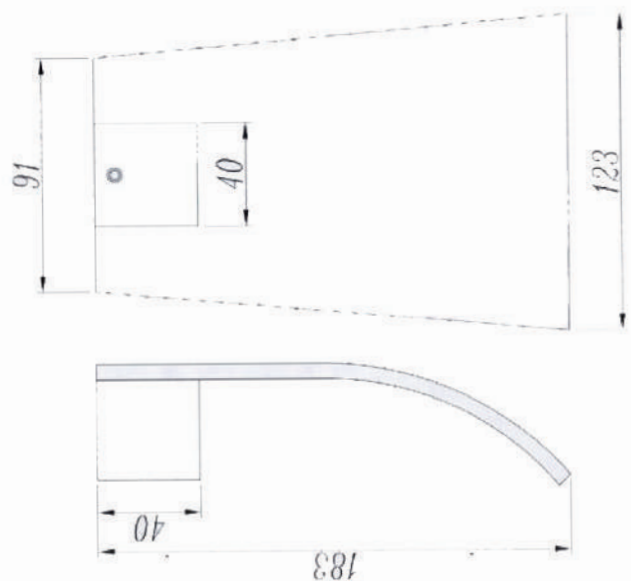
RRP: \$149.00
Finish: Brushed Nickel



● SP05.06

RRP: \$159.00
Finish: Gun Metal Grey

Feature:
Material: Brass
Weight: 1.0kg
Package Size: 22*15*7cm





Shower Holder & Connector

SR27-N.01 Chrome--\$69.00
 SR27-N.02 Matte Black--\$79.00
 SR27-N.04 Brushed Yellow Gold--\$99.00
 SR27-N.05 Brushed Nickel--\$89.00
 SR27-N.06 Gun Metal Grey--\$99.00

Feature:
 Material: Brass
 Weight: 0.8kg
 Package Size: 20*15*8cm



Hand Shower

HS8S.01 Chrome --\$35.00
 HS8S.02 Matte Black --\$45.00
 HS8S.04 Brushed Yellow Gold --\$55.00
 HS8S.05 Brushed Nickel --\$49.00
 HS8S.06 Gun Metal Grey --\$55.00

Material: ABS
 Weight: 0.3kg
 Package Size: 25*15*8cm



Hand Shower

HS5S.01 Chrome--\$35.00
 HS5S.02 Matte Black--\$45.00
 HS5S.04 Brushed Yellow Gold--\$55.00
 HS5S.05 Brushed Nickel --\$55.00
 HS5S.06 Gun Metal Grey--\$55.00

Feature:
 Material: Brass
 Weight: 0.4kg
 Package Size: 25*15*8cm



Washing Machine Taps

WST17.01+WST17.01 Chrome--\$49.90
 WST17.02+WST17.02 Matte Black--\$59.90

Feature:
 Material: Brass
 Weight: 0.5kg
 Package Size: 8*9*5cm



1500mm Shower Hose

PVC.01 Chrome--\$29.95
 PVC.02 Matte Black--\$32.95
 PVC.04 Brushed Yellow Gold--\$39.95
 PVC.05 Brushed Nickel--\$35.95
 PVC.06 Gun Metal Grey--\$39.95

Feature: 1500mm Shower Hose
 Material: PVC
 Weight: 0.5kg



● **SR30.01**
RRP: \$399.00
Finish: Chrome



(Extra free shower head included)



● **SR30.02**
RRP: \$499.00
Finish: Matte Black



(Extra free shower head included)



● **SR30.04**
RRP: \$599.00
Finish: Brushed Yellow Gold



(Extra free shower head included)



● **SR30.05**
RRP: \$549.00
Finish: Brushed Nickel



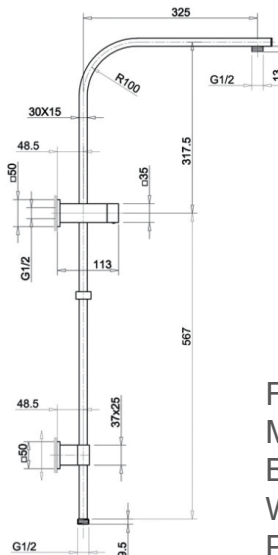
(Extra free shower head included)



● **SR30.06**
RRP: \$599.00
Finish: Gun Metal Grey



(Extra free shower head included)



Feature: Top Water Inlet
Material: 10" Brass Top Shower
Brass Handheld & Shower Rail
Weight: 5.5kg
Package Size: 101*51*15cm



Single Towel Rail 600mm

Stainless steel: AR51.01--\$73.95
Solid brass: AR21.01--\$99.95

Feature:

Material: 304 Stainless Steel/Solid Brass

Weight: 1.0kg

Package Size: 62*10*5cm



Single Towel Rail 800mm

Stainless steel: AR51-8.01--\$89.95
Solid brass: AR21-8.01--\$109.95

Feature:

Material: 304 Stainless Steel/Solid Brass

Weight: 1.2kg

Package Size: 84*10*5cm



Double Towel Rail 600mm

Stainless steel: AR52.01--\$94.95
Solid brass: AR22.01--\$129.95

Feature:

Material: 304 Stainless Steel/Solid Brass

Weight: 1.2kg

Package Size: 64*10*5cm



Double Towel Rail 800mm

Stainless steel: AR52-8.01--\$104.95
Solid brass: AR22-8.01--\$149.95

Feature:

Material: 304 Stainless Steel/Solid Brass

Weight: 1.3kg

Package Size: 84*10*5cm



Hand Towel Rail 300mm

Stainless steel: AR53.01--\$45.95
Solid brass: AR23.01--\$49.95

Feature:

Material: 304 Stainless Steel/Solid Brass

Weight: 0.6kg

Package Size: 35*9*8cm



Soap Dish

Stainless steel: AR56.01--\$45.95
Solid brass: AR26.01--\$55.95

Feature:

Material: 304 Stainless Steel/Solid Brass

Weight: 0.4kg

Package Size: 17*13*9cm



Robe Hook

Stainless steel: AR57.01--\$29.95
Solid brass: AR27.01--\$34.95

Feature:

Material: 304 Stainless Steel/Solid Brass

Weight: 0.4kg

Package Size: 8*7*7cm



Toilet Roll Holder

Stainless steel: AR58.01--\$39.95
Solid brass: AR213.01--\$44.95

Feature:

Material: 304 Stainless Steel/Solid Brass

Weight: 0.6kg

Package Size: 22*11*6cm



Shower Shelf

Solid brass: AR212.01--\$149.95

Feature:

Material: Solid Brass

Weight: 1.5kg

Package Size: 58*15*6cm



Single Towel Rail 600mm

Stainless steel: AR51.02--\$79.95
Solid brass: AR21.02--\$119.95

Feature:
Material: 304 Stainless Steel/Solid Brass
Weight: 1.0kg
Package Size: 62*10*5cm



Single Towel Rail 800mm

Stainless steel: AR51-8.02--\$94.95
Solid brass: AR21-8.02--\$139.95

Feature:
Material: 304 Stainless Steel/Solid Brass
Weight: 1.2kg
Package Size: 84*10*5cm



Double Towel Rail 600mm

Stainless steel: AR52.02--\$99.95
Solid brass: AR22.02--\$149.95

Feature:
Material: 304 Stainless Steel/Solid Brass
Weight: 1.2kg
Package Size: 64*10*5cm



Double Towel Rail 800mm

Stainless steel: AR52-8.02--\$114.95
Solid brass: AR22-8.02--\$169.95

Feature:
Material: 304 Stainless Steel/Solid Brass
Weight: 1.3kg
Package Size: 84*10*5cm



Hand Towel Rail 300mm

Stainless steel: AR53.02--\$54.95
Solid brass: AR23.02--\$59.95

Feature:
Material: 304 Stainless Steel/Solid Brass
Weight: 0.6kg
Package Size: 42*9*8cm



Soap Dish

Stainless steel: AR56.02--\$54.95
Solid brass: AR26.02--\$59.95

Feature:
Material: 304 Stainless Steel/Solid Brass
Package Size: 17*13*9cm



Robe Hook

Stainless steel: AR57.02--\$34.95
Solid brass: AR27.02--\$39.95

Feature:
Material: 304 Stainless Steel/Solid Brass
Weight: 0.4kg
Package Size: 8*7*7cm



Toilet Roll Holder

Stainless steel: AR58.02--\$44.95
Solid brass: AR213.02--\$49.95

Feature:
Material: 304 Stainless Steel/Solid Brass
Weight: 0.6kg
Package Size: 22*11*6cm



Shower Shelf

Solid brass: AR212.02--\$159.95

Feature:
Material: Solid Brass
Weight: 1.5kg
Package Size: 58*15*6cm



Single Towel Rail 600mm

Stainless steel: AR51.03--\$129.95
Solid brass: AR21.03--\$139.95

Feature:

Material: 304 Stainless Steel/Solid Brass

Weight: 1.0kg

Package Size: 62*10*5cm



Single Towel Rail 800mm

Stainless steel: AR51-8.03--\$139.95
Solid brass: AR21-8.03--\$149.95

Feature:

Material: 304 Stainless Steel/Solid Brass

Weight: 1.2kg

Package Size: 84*10*5cm



Double Towel Rail 600mm

Stainless steel: AR52.03--\$149.95
Solid brass: AR22.03--\$159.95

Feature:

Material: 304 Stainless Steel/Solid Brass

Weight: 1.2kg

Package Size: 64*10*5cm



Double Towel Rail 800mm

Stainless steel: AR52-8.03--\$159.95
Solid brass: AR22-8.03--\$179.95

Feature:

Material: 304 Stainless Steel/Solid Brass

Weight: 1.3kg

Package Size: 84*10*5cm



Hand Towel Rail 300mm

Stainless steel: AR53.03--\$69.95
Solid brass: AR23.03--\$74.95

Feature:

Material: 304 Stainless Steel/Solid Brass

Weight: 0.6kg

Package Size: 42*9*8cm



Soap Dish

Stainless steel: AR56.03--\$69.95
Solid brass: AR26.03--\$79.95

Feature:

Material: 304 Stainless Steel/Solid Brass

Weight: 0.6kg

Package Size: 22*11*6cm



Robe Hook

Stainless steel: AR57.03--\$34.95
Solid brass: AR27.03--\$39.95

Feature:

Material: 304 Stainless Steel/Solid Brass

Weight: 0.4kg

Package Size: 8*7*7cm



Toilet Roll Holder

Stainless steel: AR58.03--\$59.95
Solid brass: AR213.03--\$64.95

Feature:

Material: 304 Stainless Steel/Solid Brass

Weight: 0.4kg

Package Size: 17*13*9cm



Shower Shelf

Solid brass: AR212.03--\$179.95

Feature:

Material: Solid Brass

Weight: 1.5kg

Package Size: 58*15*6cm



Single Towel Rail 600mm

Stainless steel: AR51.04--\$129.95
Solid brass: AR21.04--\$159.95

Feature:

Material: 304 Stainless Steel/Solid Brass

Weight: 1.0kg

Package Size: 62*10*5cm



Single Towel Rail 800mm

Stainless steel: AR51-8.04--\$139.95
Solid brass: AR21-8.04--\$169.95

Feature:

Material: 304 Stainless Steel/Solid Brass

Weight: 1.2kg

Package Size: 84*10*5cm



Double Towel Rail 600mm

Stainless steel: AR52.04--\$139.95
Solid brass: AR22.04--\$189.95

Feature:

Material: 304 Stainless Steel/Solid Brass

Weight: 1.2kg

Package Size: 64*10*5cm



Double Towel Rail 800mm

Stainless steel: AR52-8.04--\$159.95
Solid brass: AR22-8.04--\$199.95

Feature:

Material: 304 Stainless Steel/Solid Brass

Weight: 1.3kg

Package Size: 84*10*5cm



Hand Towel Rail 300mm

Stainless steel: AR53.04--\$69.95
Solid brass: AR23.04--\$79.95

Feature:

Material: 304 Stainless Steel/Solid Brass

Weight: 0.6kg

Package Size: 35*9*8cm



Soap Dish

Stainless steel: AR56.04--\$69.95
Solid brass: AR26.04--\$89.95

Feature:

Material: 304 Stainless Steel/Solid Brass

Weight: 0.4kg

Package Size: 17*13*9cm



Robe Hook

Stainless steel: AR57.04--\$39.95
Solid brass: AR27.04--\$44.95

Feature:

Material: 304 Stainless Steel/Solid Brass

Weight: 0.4kg

Package Size: 8*7*7cm



Toilet Roll Holder

Stainless steel: AR58.04--\$59.95
Solid brass: AR213.04--\$64.95

Feature:

Material: 304 Stainless Steel/Solid Brass

Weight: 0.6kg

Package Size: 22*11*6cm



Shower Shelf

AR212.04--\$199.95

Feature:

Material: Solid Brass

Weight: 1.5kg

Package Size: 58*15*6cm



Single Towel Rail 600mm

Stainless steel: AR51.05--\$119.95
Solid brass: AR21.05--\$149.95

Feature:

Material: 304 Stainless Steel/Solid Brass
Weight: 1.0kg
Package Size: 62*10*5cm



Single Towel Rail 800mm

Stainless steel: AR51-8.05--\$129.95
Solid brass: AR21-8.05--\$159.95

Feature:

Material: 304 Stainless Steel/Solid Brass
Weight: 1.2kg
Package Size: 84*10*5cm



Double Towel Rail 600mm

Stainless steel: AR52.05--\$129.95
Solid brass: AR22.05--\$179.95

Feature:

Material: 304 Stainless Steel/Solid Brass
Weight: 1.2kg
Package Size: 64*10*5cm



Double Towel Rail 800mm

Stainless steel: AR52-8.05--\$149.95
Solid brass: AR22-8.05--\$189.95

Feature:

Material: 304 Stainless Steel/Solid Brass
Weight: 1.3kg
Package Size: 84*10*5cm



Hand Towel Rail 300mm

Stainless steel: AR53.05--\$64.95
Solid brass: AR23.05--\$69.95

Feature:

Material: 304 Stainless Steel/Solid Brass
Weight: 0.6kg
Package Size: 35*9*8cm



Soap Dish

Stainless steel: AR56.05--\$64.95
Solid brass: AR26.05--\$79.95

Feature:

Material: 304 Stainless Steel/Solid Brass
Weight: 0.4kg
Package Size: 17*13*9cm



Robe Hook

Stainless steel: AR57.05--\$37.95
Solid brass: AR27.05--\$42.95

Feature:

Material: 304 Stainless Steel/Solid Brass
Weight: 0.4kg
Package Size: 8*7*7cm



Toilet Roll Holder

Stainless steel: AR58.05--\$54.95
Solid brass: AR13.05--\$59.95

Feature:

Material: 304 Stainless Steel/Solid Brass
Weight: 0.6kg
Package Size: 22*11*6cm



Shower Shelf

AR212.05--\$189.95

Feature:

Material: Solid Brass
Weight: 1.5kg
Package Size: 58*15*6cm



Single Towel Rail 600mm

Stainless steel: AR51.06--\$129.95
Solid brass: AR21.06--\$159.95

Feature:

Material: 304 Stainless Steel/Solid Brass
Weight: 1.0kg
Package Size: 62*10*5cm



Single Towel Rail 800mm

Stainless steel: AR51-8.06--\$139.95
Solid brass: AR21-8.06--\$169.95

Feature:

Material: 304 Stainless Steel/Solid Brass
Weight: 1.2kg
Package Size: 84*10*5cm



Double Towel Rail 600mm

Stainless steel: AR52.06--\$139.95
Solid brass: AR22.06--\$189.95

Feature:

Material: 304 Stainless Steel/Solid Brass
Weight: 1.2kg
Package Size: 64*10*5cm



Double Towel Rail 800mm

Stainless steel: AR52-8.06--\$159.95
Solid brass: AR22-8.06--\$199.95

Feature:

Material: 304 Stainless Steel/Solid Brass
Weight: 1.3kg
Package Size: 84*10*5cm



Hand Towel Rail 300mm

Stainless steel: AR53.06--\$69.95
Solid brass: AR23.06--\$79.95

Feature:

Material: 304 Stainless Steel/Solid Brass
Weight: 0.6kg
Package Size: 35*9*8cm



Soap Dish

Stainless steel: AR56.06--\$69.95
Solid brass: AR26.06--\$89.95

Feature:

Material: 304 Stainless Steel/Solid Brass
Weight: 0.4kg
Package Size: 17*13*9cm



Robe Hook

Stainless steel: AR57.06--\$39.95
Solid brass: AR27.06--\$44.95

Feature:

Material: 304 Stainless Steel/Solid Brass
Weight: 0.4kg
Package Size: 8*7*7cm



Toilet Roll Holder

Stainless steel: AR58.06--\$59.95
Solid brass: AR213.06--\$64.95

Feature:

Material: 304 Stainless Steel/Solid Brass
Weight: 0.6kg
Package Size: 22*11*6cm



Shower Shelf

AR212.06--\$199.95

Feature:

Material: Solid Brass
Weight: 1.5kg
Package Size: 58*15*6cm



Basin Mixer

BT23.01--\$99.00

Feature:
Material: Brass
Weight: 1.2kg
Package Size: 31*23*8cm



Tall Basin Mixer

TBT20.01--\$169.00

Feature:
Material: Brass
Weight: 1.5kg
Package Size: 44*21*6cm



Pull Out Kitchen Mixer

KT21.01--\$299.00

Feature:
Material: Brass
Weight: 3.0kg
Package Size: 67*32*8cm



Standard Kitchen Mixer

KT26.01--\$169.00

Feature:
Material: Brass
Weight: 2.0kg
Package Size: 44*14*7cm



Wall Mixer With Spout

WMT44.01--\$189.00

Feature:
Material: Brass
Weight: 1.8kg
Package Size: 31*23*8cm



Bath Spout

SP12.01--\$39.95

Feature:
Material: Brass
Weight: 0.3kg
Package Size: 33*8*8cm



Shower Mixer
(with 120mm standard plate)

WM26.01--\$89.00

Feature:
Material: Brass
Weight: 0.8kg
Package Size: 16*14*7cm



Shower Mixer with 65mm Thin Plate

WM26.01T--\$99.00

Feature:
Material: Brass
Weight: 0.7kg
Package Size: 16*14*7cm



Shower Diverter

WMD25.01--\$129.00

Feature:
Material: Brass
Weight: 2.0kg
Package Size: 22*18*9cm



Basin Mixer

BT23.02--\$139.00

Feature:
Material: Brass
Weight: 1.2kg
Package Size: 31*23*8cm



Tall Basin Mixer

TBT20.02--\$199.00

Feature:
Material: Brass
Weight: 1.5kg
Package Size: 44*21*6cm



Pull Out Kitchen Mixer

KT21.02--\$349.00

Feature:
Material: Brass
Weight: 3.0kg
Package Size: 67*32*8cm



Standard Kitchen Mixer

KT26.02--\$189.00

Feature:
Material: Brass
Weight: 2.0kg
Package Size: 44*14*7cm



Wall Mixer With Spout

WMT44.02--\$219.00

Feature:
Material: Brass
Weight: 1.8kg
Package Size: 31*23*8cm



Bath Spout

SP12.02--\$54.95

Feature:
Material: Brass
Weight: 0.3kg
Package Size: 33*8*8cm



Shower Mixer
(with 120mm standard plate)

WM26.02--\$119.00

Feature:
Material: Brass
Weight: 0.8kg
Package Size: 16*14*7cm



Shower Mixer with 65mm Thin Plate

WM26.02T--\$129.00

Feature:
Material: Brass
Weight: 0.7kg
Package Size: 16*14*7cm



Shower Diverter

WMD25.02--\$149.00

Feature:
Material: Brass
Weight: 2.0kg
Package Size: 22*18*9cm



Basin Mixer

BT23.04--\$229.00

Feature:
Material: Brass
Weight: 1.2kg
Package Size: 31*23*8cm



Tall Basin Mixer

TBT20.04--\$299.00

Feature:
Material: Brass
Weight: 1.5kg
Package Size: 44*21*6cm



Pull Out Kitchen Mixer

KT21.04--\$549.00

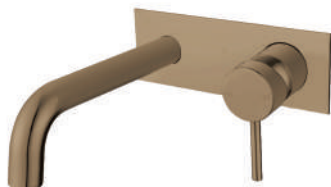
Feature:
Material: Brass
Weight: 3.0kg
Package Size: 67*32*8cm



Standard Kitchen Mixer

KT26.04--\$349.00

Feature:
Material: Brass
Weight: 2.0kg
Package Size: 44*14*7cm



Wall Mixer With Spout

WMT44.04--\$339.00

Feature:
Material: Brass
Weight: 1.8kg
Package Size: 31*23*8cm



Bath Spout

SP12.04--\$79.95

Feature:
Material: Brass
Weight: 0.3kg
Package Size: 33*8*8cm



Shower Mixer
(with 120mm standard plate)

WM26.04--\$169.00

Feature:
Material: Brass
Weight: 0.8kg
Package Size: 16*14*7cm



Shower Mixer with 65mm Thin Plate

WM26.04T--\$179.00

Feature:
Material: Brass
Weight: 0.7kg
Package Size: 16*14*7cm



Shower Diverter

WMD25.04--\$219.00

Feature:
Material: Brass
Weight: 2.0kg
Package Size: 22*18*9cm



Basin Mixer

BT23.05--\$159.00

Feature:
Material: Brass
Weight: 1.2kg
Package Size: 31*23*8cm



Tall Basin Mixer

TBT20.05--\$269.00

Feature:
Material: Brass
Weight: 1.5kg
Package Size: 44*21*6cm



Pull Out Kitchen Mixer

KT21.05--\$479.00

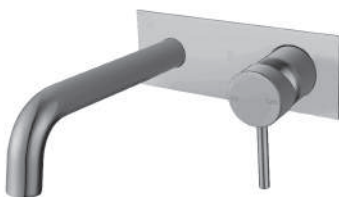
Feature:
Material: Brass
Weight: 3.0kg
Package Size: 67*32*8cm



Standard Kitchen Mixer

KT26.05--\$279.00

Feature:
Material: Brass
Weight: 2.0kg
Package Size: 44*14*7cm



Wall Mixer With Spout

WMT44.05--\$259.00

Feature:
Material: Brass
Weight: 1.8kg
Package Size: 31*23*8cm



Bath Spout

SP12.05--\$59.95

Feature:
Material: Brass
Weight: 0.3kg
Package Size: 33*8*8cm



Shower Mixer
(with 120mm standard plate)

WM26.05--\$139.00

Feature:
Material: Brass
Weight: 0.8kg
Package Size: 16*14*7cm



Shower Mixer with 65mm Thin Plate

WM26.05T--\$149.00

Feature:
Material: Brass
Weight: 0.7kg
Package Size: 16*14*7cm



Shower Diverter

WMD25.05--\$169.00

Feature:
Material: Brass
Weight: 2.0kg
Package Size: 22*18*9cm



Basin Mixer

BT23.06--\$229.00

Feature:
Material: Brass
Weight: 1.2kg
Package Size: 31*23*8cm



Tall Basin Mixer

TBT20.06--\$299.00

Feature:
Material: Brass
Weight: 1.5kg
Package Size: 44*21*6cm



Pull Out Kitchen Mixer

KT21.06--\$549.00

Feature:
Material: Brass
Weight: 3.0kg
Package Size: 67*32*8cm



Standard Kitchen Mixer

KT26.06--\$349.00

Feature:
Material: Brass
Weight: 2.0kg
Package Size: 44*14*7cm



Wall Mixer With Spout

WMT44.06--\$339.00

Feature:
Material: Brass
Weight: 1.8kg
Package Size: 31*23*8cm



Bath Spout

SP12.06--\$79.95

Feature:
Material: Brass
Weight: 0.3kg
Package Size: 33*8*8cm



Shower Mixer
(with 120mm standard plate)
WM26.06--\$169.00

Feature:
Material: Brass
Weight: 0.8kg
Package Size: 16*14*7cm



Shower Mixer with 65mm Thin Plate
WM26.06T--\$179.00

Feature:
Material: Brass
Weight: 0.7kg
Package Size: 16*14*7cm



Shower Diverter
WMD25.06--\$219.00

Feature:
Material: Brass
Weight: 2.0kg
Package Size: 22*18*9cm



Basin Mixer

BT23.11--\$239.00

Feature:
Material: Brass
Weight: 1.2kg
Package Size: 31*23*8cm



Tall Basin Mixer

TBT20.11--\$309.00

Feature:
Material: Brass
Weight: 1.5kg
Package Size: 44*21*6cm



Pull Out Kitchen Mixer

KT21.11--\$579.00

Feature:
Material: Brass
Weight: 3.0kg
Package Size: 67*32*8cm



Standard Kitchen Mixer

KT26.11--\$369.00

Feature:
Material: Brass
Weight: 2.0kg
Package Size: 44*14*7cm



Wall Mixer With Spout

WMT44.11--\$349.00

Feature:
Material: Brass
Weight: 1.8kg
Package Size: 31*23*8cm



Bath Spout

SP12.11--\$83.95

Feature:
Material: Brass
Weight: 0.3kg
Package Size: 33*8*8cm



Shower Mixer
(with 120mm standard plate)

WM26.11--\$179.00

Feature:
Material: Brass
Weight: 0.8kg
Package Size: 16*14*7cm



Shower Mixer with 65mm Thin Plate

WM26.11T--\$189.00

Feature:
Material: Brass
Weight: 0.7kg
Package Size: 16*14*7cm



Shower Diverter

WMD25.11--\$229.00

Feature:
Material: Brass
Weight: 2.0kg
Package Size: 22*18*9cm



Single Towel Rail 900mm (Cuttable)

AR91.01--\$39.95

Feature: Cut to any size
Material: 304 Stainless Steel
Weight: 0.3kg
Package Size: 91*10*10cm



Double Towel Rail 790mm (Cuttable)

AR62.01--\$54.95

Feature:
Material: 304 Stainless Steel
Weight: 0.5kg
Package Size: 81*12*7cm



Hand Towel Ring

AR63.01--\$24.95

Feature:
Material: 304 Stainless Steel
Weight: 0.3kg
Package Size: 18*18*6cm



Robe Hook

AR67.01--\$24.95

Feature:
Material: 304 Stainless Steel
Weight: 0.3kg
Package Size: 8*7*7cm



Toilet Roll Holder

AR68.01--\$27.95

Feature:
Material: 304 Stainless Steel
Weight: 0.3kg
Package Size: 18*18*6cm



Hand Towel Rail 350mm

AR610.01--\$32.95

Feature:
Material: 304 Stainless Steel
Weight: 0.3kg
Package Size: 40.5*10*8cm



Toilet Roll Holder

AR611.01--\$32.95

Feature:
Material: 304 Stainless Steel
Weight: 0.3kg
Package Size: 18*18*6cm



Shower Shelf

AR612.01--\$59.95

Feature:
Material: 304 Stainless Steel
Weight: 0.8kg
Package Size: 35*20*10cm

Chrome



Single Towel Rail 900mm
(Cuttable)

AR91.02--\$46.95

Feature: Cut to any size
Material: 304 Stainless Steel
Weight: 0.3kg
Package Size: 91*10*10cm



Double Towel Rail 790mm
(Cuttable)

AR62.02--\$64.95

Feature:
Material: 304 Stainless Steel
Weight: 0.5kg
Package Size: 81*12*7cm



Hand Towel Ring

AR63.02--\$28.95

Feature:
Material: 304 Stainless Steel
Weight: 0.3kg
Package Size: 18*18*6cm



Robe Hook

AR67.02--\$29.95

Feature:
Material: 304 Stainless Steel
Weight: 0.3kg
Package Size: 8*7*7cm



Toilet Roll Holder

AR68.02--\$34.95

Feature:
Material: 304 Stainless Steel
Weight: 0.3kg
Package Size: 18*18*6cm



Hand Towel Rail 350mm

AR610.02--\$39.95

Feature:
Material: 304 Stainless Steel
Weight: 0.3kg
Package Size: 40.5*10*8cm



Toilet Roll Holder

AR611.02--\$39.95

Feature:
Material: 304 Stainless Steel
Weight: 0.3kg
Package Size: 18*18*6cm



Shower Shelf

AR612.02--\$69.95

Feature:
Material: 304 Stainless Steel
Weight: 0.8kg
Package Size: 35*20*10cm

Black



Single Towel Rail 900mm
(Cuttable)

AR91.04--\$69.95

Feature: Cut to any size
Material: 304 Stainless Steel
Weight: 0.3kg
Package Size: 91*10*10cm



Double Towel Rail 790mm
(Cuttable)

AR62.04--\$114.95

Feature:
Material: 304 Stainless Steel
Weight: 0.5kg
Package Size: 81*12*7cm



Hand Towel Ring

AR63.04--\$49.95

Feature:
Material: 304 Stainless Steel
Weight: 0.3kg
Package Size: 18*18*6cm



Robe Hook

AR67.04--\$36.95

Feature:
Material: 304 Stainless Steel
Weight: 0.3kg
Package Size: 8*7*7cm



Toilet Roll Holder

AR68.04--\$42.95

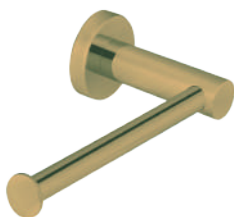
Feature:
Material: 304 Stainless Steel
Weight: 0.3kg
Package Size: 18*18*6cm



Hand Towel Rail 350mm

AR610.04--\$59.95

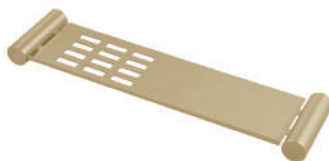
Feature:
Material: 304 Stainless Steel
Weight: 0.3kg
Package Size: 40.5*10*8cm



Toilet Roll Holder

AR611.04--\$59.95

Feature:
Material: 304 Stainless Steel
Weight: 0.3kg
Package Size: 18*18*6cm



Shower Shelf

AR612.04--\$99.95

Feature:
Material: 304 Stainless Steel
Weight: 0.8kg
Package Size: 35*20*10cm

Brushed Yellow Gold



Single Towel Rail 900mm
(Cuttable)

AR91.05--\$59.95

Feature: Cut to any size
Material: 304 Stainless Steel
Weight: 0.3kg
Package Size: 91*10*10cm



Double Towel Rail 790mm
(Cuttable)

AR62.05--\$89.95

Feature:
Material: 304 Stainless Steel
Weight: 0.5kg
Package Size: 81*12*7cm



Hand Towel Ring

AR63.05--\$39.95

Feature:
Material: 304 Stainless Steel
Weight: 0.3kg
Package Size: 18*18*6cm



Robe Hook

AR67.05--\$32.95

Feature:
Material: 304 Stainless Steel
Weight: 0.3kg
Package Size: 8*7*7cm



Toilet Roll Holder

AR68.05--\$39.95

Feature:
Material: 304 Stainless Steel
Weight: 0.3kg
Package Size: 18*18*6cm



Hand Towel Rail 350mm

AR610.05--\$54.95

Feature:
Material: 304 Stainless Steel
Weight: 0.3kg
Package Size: 35*35*8cm



Toilet Roll Holder

AR611.05--\$54.95

Feature:
Material: 304 Stainless Steel
Weight: 0.3kg
Package Size: 18*18*6cm



Shower Shelf

AR612.05--\$89.95

Feature:
Material: 304 Stainless Steel
Weight: 0.8kg
Package Size: 35*20*10cm

Brushed Nickel



Single Towel Rail 900mm
(Cuttable)

AR91.06--\$69.95

Feature: Cut to any size
Material: 304 Stainless Steel
Weight: 0.3kg
Package Size: 91*10*10cm



Double Towel Rail 790mm
(Cuttable)

AR62.06--\$114.95

Feature:
Material: 304 Stainless Steel
Weight: 0.5kg
Package Size: 81*12*7cm



Hand Towel Ring

AR63.06--\$49.95

Feature:
Material: 304 Stainless Steel
Weight: 0.3kg
Package Size: 18*18*6cm



Robe Hook

AR67.06--\$36.95

Feature:
Material: 304 Stainless Steel
Weight: 0.3kg
Package Size: 8*7*7cm



Toilet Roll Holder

AR68.06--\$42.95

Feature:
Material: 304 Stainless Steel
Weight: 0.3kg
Package Size: 18*18*6cm



Hand Towel Rail 350mm

AR610.06--\$59.95

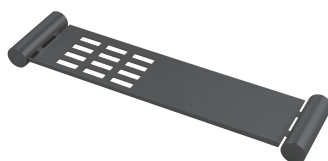
Feature:
Material: 304 Stainless Steel
Weight: 0.3kg
Package Size: 40.5*10*8cm



Toilet Roll Holder

AR611.06--\$59.95

Feature:
Material: 304 Stainless Steel
Weight: 0.3kg
Package Size: 18*18*6cm



Shower shelf

AR612.06--\$99.95

Feature:
Material: 304 Stainless Steel
Weight: 0.8kg
Package Size: 35*20*10cm

Gun Metal Grey



Single Towel Rail 900mm
(Cuttable)

AR91.11--\$72.95

Feature: Cut to any size
Material: 304 Stainless Steel
Weight: 0.3kg
Package Size: 91*10*10cm



Double Towel Rail 790mm
(Cuttable)

AR62.11--\$119.95

Feature:
Material: 304 Stainless Steel
Weight: 0.5kg
Package Size: 81*12*7cm



Hand Towel Ring

AR63.11--\$51.95

Feature:
Material: 304 Stainless Steel
Weight: 0.3kg
Package Size: 18*18*6cm



Robe Hook

AR67.11--\$38.95

Feature:
Material: 304 Stainless Steel
Weight: 0.3kg
Package Size: 8*7*7cm



Hand Towel Rail 350mm

AR610.11--\$ 62.95

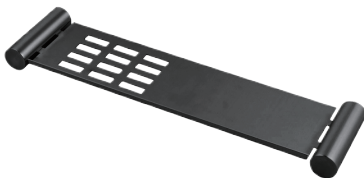
Feature:
Material: 304 Stainless Steel
Weight: 0.3kg
Package Size: 40.5*10*8cm



Toilet Roll Holder

AR611.11--\$62.95

Feature:
Material: 304 Stainless Steel
Weight: 0.3kg
Package Size: 18*18*6cm



Shower Shelf

AR612.11--\$105.95

Feature:
Material: 304 Stainless Steel
Weight: 0.8kg
Package Size: 35*20*10cm

Platinum Black



● SR47-1.01

RRP: \$99.00
Finish: Chrome



● SR47-1.02

RRP: \$169.00
Finish: Matte Black



● SR47-1.04

RRP: \$269.00
Finish: Brushed Yellow Gold



● SR47-1.05

RRP: \$259.00
Finish: Brushed Nickel



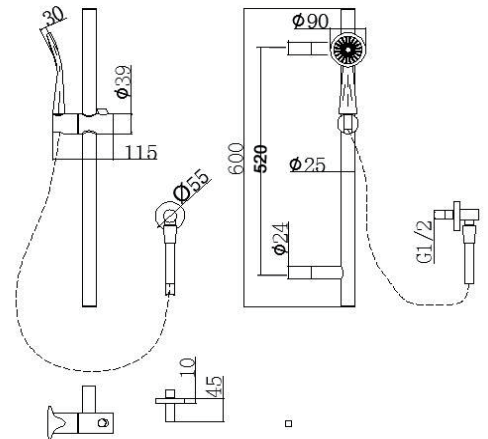
- SR47-1.06

RRP: \$269.00
Finish: Gun Metal Grey



- SR47-1.11

RRP: \$279.00
Finish: Platinum Black



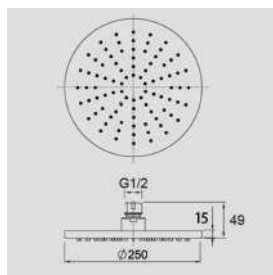
Feature: Sliding Rail
Material: Stainless Steel&ABS
Weight: 3kg
Package Size: 70*23*6cm



(Extra free shower head included)

● **SR28A.01**

RRP: \$299.00
Finish: Chrome



(Extra free shower head included)

● **SR28A.02**

RRP: \$399.00
Finish: Matte Black



(Extra free shower head included)

● **SR28A.04**

RRP: \$549.00
Finish: Brushed Yellow Gold



(Extra free shower head included)

● **SR28A.05**

RRP: \$499.00
Finish: Brushed Nickel



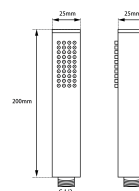
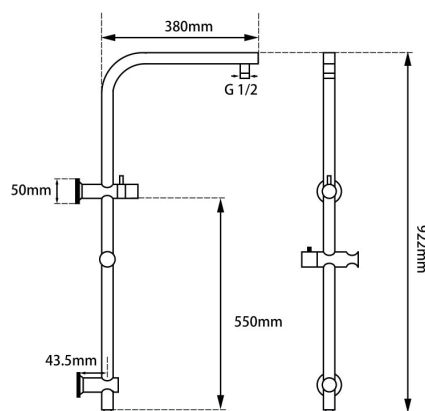
(Extra free shower head included)

● **SR28A.06**

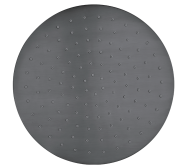
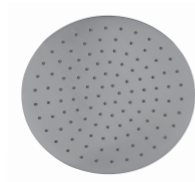
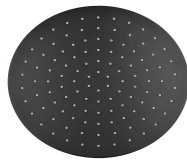
RRP: \$549.00
Finish: Gun Metal Grey

SR28A.11

RRP: \$575.00
Finish: Platinum Black



Feature: Top Water Inlet
Material: 10" Brass Top Shower
Brass Handheld & Shower Rail
Weight: 4.5kg
Package Size: 72*51*11cm



Solid Brass Shower Head 250mm

SR010.01 Chrome -\$129.00
 SR010.02 Matte Black -\$139.00
 SR010.04 Brushed Yellow Gold -\$199.00
 SR010.05 Brushed Nickel -\$169.00
 SR010.06 Gun Metal Grey -\$199.00

Feature:
 Material: Brass
 Weight: 1kg
 Package Size: 26*26*10cm



Wall Shower Arm

SE27.01 Chrome -\$79.00
 SE27.02 Matte Black -\$85.00
 SE27.04 Brushed Yellow Gold -\$99.00
 SE27.05 Brushed Nickel -\$89.00
 SE27.06 Gun Metal Grey -\$99.00

Feature:
 Material: 304 Stainless Steel
 Weight: 1kg
 Package Size: 40*40*10cm



Ceiling Shower Arm 200/400mm

SE05.01 Chrome -\$39.00
 SE05.02 Matte Black -\$49.00
 SE05.04 Brushed Yellow Gold -\$69.00
 SE05.05 Brushed Nickel -\$59.00
 SE05.06 Gun Metal Grey -\$69.00

SE20.01 Chrome -\$49.00
 SE20.02 Matte Black -\$59.00
 SE20.04 Brushed Yellow Gold -\$79.00
 SE20.05 Brushed Nickel -\$69.00
 SE20.06 Gun Metal Grey -\$79.00

Feature:
 Material: 304 Stainless Steel
 Weight: 0.3/0.5kg

● BS02.01

RRP: \$249.00
Finish: Chrome



● BS02.02

RRP: \$299.00
Finish: Matte Black



● BS02.04

RRP: \$499.00
Finish: Brushed Yellow Gold



● BS02.05

RRP: \$399.00
Finish: Brushed Nickel

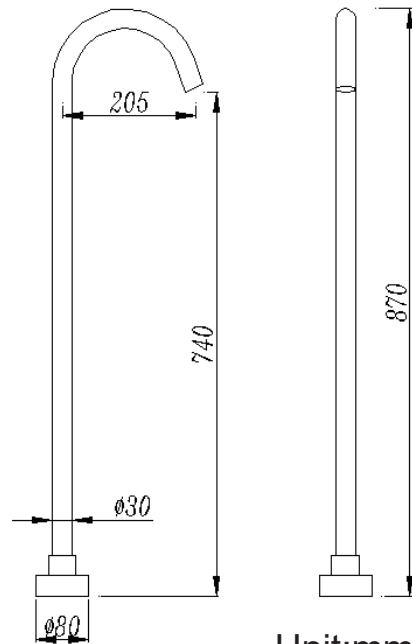


● BS02.06

RRP: \$499.00
Finish: Gun Metal Grey



Feature: Free Standing Spout
Material: Stainless Steel
Weight: 2kg
Package Size: 95*30*15cm



Unit:mm

● BS07.01

RRP: \$399.00
Finish: Chrome



● BS07.02

RRP: \$449.00
Finish: Matte Black



● BS07.04

RRP: \$599.00
Finish: Brushed Yellow Gold



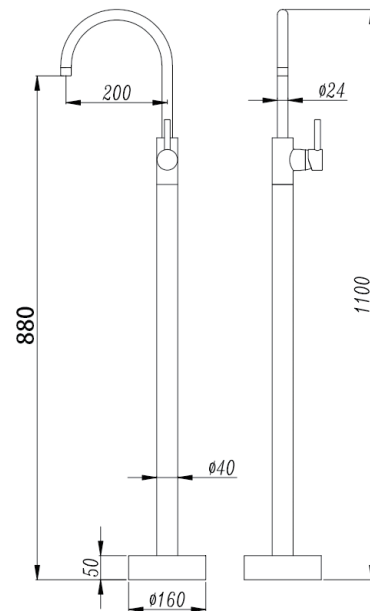
● BS07.05

RRP: \$499.00
Finish: Brushed Nickel



● BS07.06

RRP: \$599.00
Finish: Gun Metal Grey



Unit:mm

Feature:
Material:Brass
Weight:3kg
Package Size:120*30*20cm

● SP16.01

RRP: \$699.00
Finish: Chrome



● SP16.02

RRP: \$749.00
Finish: Matte Black



● SP16.04

RRP: \$899.00
Finish: Brushed Yellow Gold



● SP16.05

RRP: \$849.00
Finish: Brushed Nickel

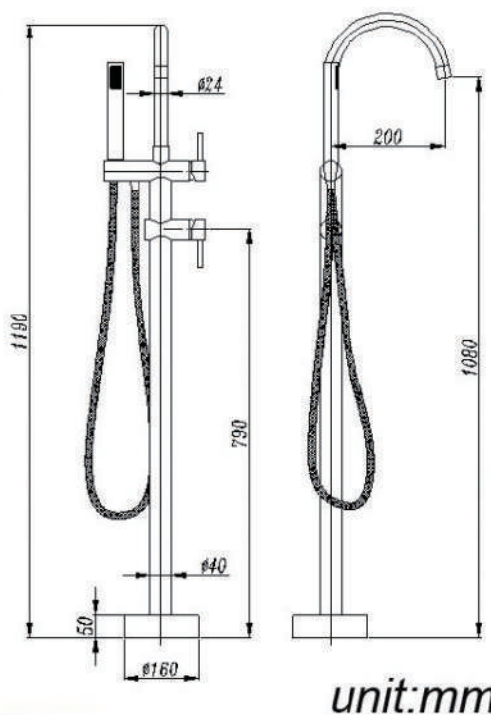


● SP16.06

RRP: \$899.00
Finish: Gun Metal Grey



Feature:
Material: Brass
Weight: 6kg
Package Size: 120*30*20cm





● WST16.01+WST16.01

RRP: \$39.95
Finish: Chrome



● WST16.02+WST16.02

RRP: \$49.95
Finish: Matte Black



● WST16.04+WST16.04

RRP: \$69.95
Finish: Brushed Yellow Gold



● WST16.05+WST16.05

RRP: \$59.95
Finish: Brushed Nickel



● WST16.06+WST16.06

RRP: \$69.95
Finish: Gun Metal Grey



● SP04.01

RRP: \$69.00

Finish: Chrome

Material: Brass

Weight: 1.5kg

Package Size: 44*21*10cm



● SP04.02

RRP: \$79.00

Finish: Matte Black

Material: Brass

Weight: 1.5kg

Package Size: 44*21*10cm



● SP04.04

RRP: \$129.00

Finish: Brushed Yellow Gold

Material: Brass

Weight: 1.5kg

Package Size: 44*21*10cm



● SP04.05

RRP: \$109.00

Finish: Brushed Nickel

Material: Brass

Weight: 1.5kg

Package Size: 44*21*10cm



● SP04.06

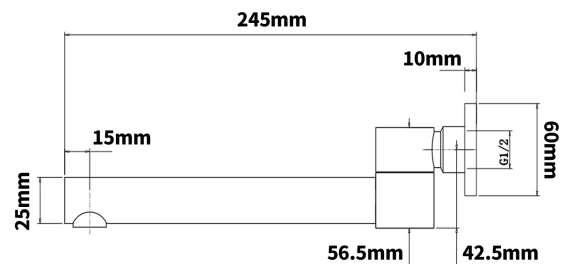
RRP: \$129.00

Finish: Gun Metal Grey

Material: Brass

Weight: 1.5kg

Package Size: 44*21*10cm





Shower Holder & Connector

SR31-N.01 Chrome--\$49.95
 SR31-N.02 Matte Black--\$54.95
 SR31-N.04 Brushed Yellow Gold--\$69.95
 SR31-N.05 Brushed Nickel--\$59.95
 SR31-N.06 Gun Metal Grey--\$69.95

Feature:
 Material: Brass
 Weight: 1kg
 Package Size: 20*20*10cm



Hand Shower

HS2R.01 Chrome-\$25.00
 HS2R.02 Matte Black-\$30.00
 HS2R.04 Brushed Yellow Gold-\$55.00
 HS2R.05 Brushed Nickel-\$49.00
 HS2R.06 Gun Metal Grey-\$55.00

Feature:
 Material: Brass
 Weight: 0.8kg
 Package Size: 25*15*8cm



Hand Shower

HS11R.01 Chrome-\$29.95
 HS11R.02 Matte Black-\$39.95
 HS11R.04 Brushed Yellow Gold-\$59.95
 HS11R.05 Brushed Nickel-\$49.00
 HS11R.06 Gun Metal Grey-\$59.95
 HS11R.11 Platinum Black-\$64.95

Feature:
 Material: ABS
 Weight: 0.3kg
 Package Size: 25*15*8cm



Shower Taps

WT07.01 Chrome-\$99.00
 WT07.02 Matte Black-\$129.00
 WT07.04 Brushed Yellow Gold-\$179.00
 WT07.05 Brushed Nickel-\$159.00
 WT07.06 Gun Metal Grey-\$179.00

Feature:
 Material: Brass
 Weight: 0.75kg
 Package Size: 16*14*10cm



● BT201.01
RRP: \$199.00
Finish: Chrome



● BT201.02
RRP: \$229.00
Finish: Matte Black



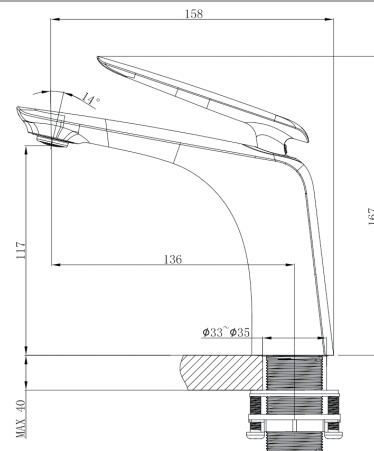
● BT201.04
RRP: \$299.00
Finish: Brushed Yellow Gold



● BT201.05
RRP: \$269.00
Finish: Brushed Nickel



● BT201.06
RRP: \$299.00
Finish: Gun Metal Grey



Feature:
Material: Brass
Weight: 1.8kg
Package Size: 30*22.5*8.5cm



● TBT202.01

RRP: \$299.00
Finish: Chrome



● TBT202.02

RRP: \$329.00
Finish: Matte Black



● TBT202.04

RRP: \$399.00
Finish: Brushed Yellow Gold



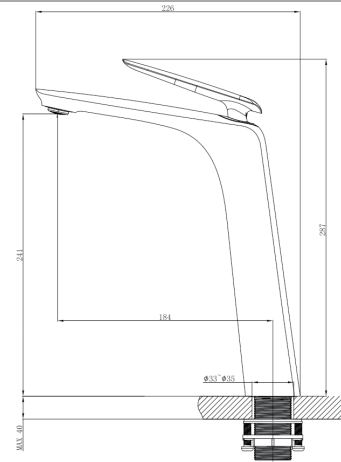
● TBT202.05

RRP: \$379.00
Finish: Brushed Nickel



● TBT202.06

RRP: \$399.00
Finish: Gun Metal Grey



Feature:

Material: Brass

Weight: 2.3kg

Package Size: 45.5*25*7.5cm

All prices include GST and are subject to change without notice.
Phone: (07) 4633 4445 Email: sales@norico.com.au





● WM205.01

RRP: \$129.00
Finish: Chrome



● WM205.02

RRP: \$149.00
Finish: Matte Black



● WM205.04

RRP: \$199.00
Finish: Brushed Yellow Gold



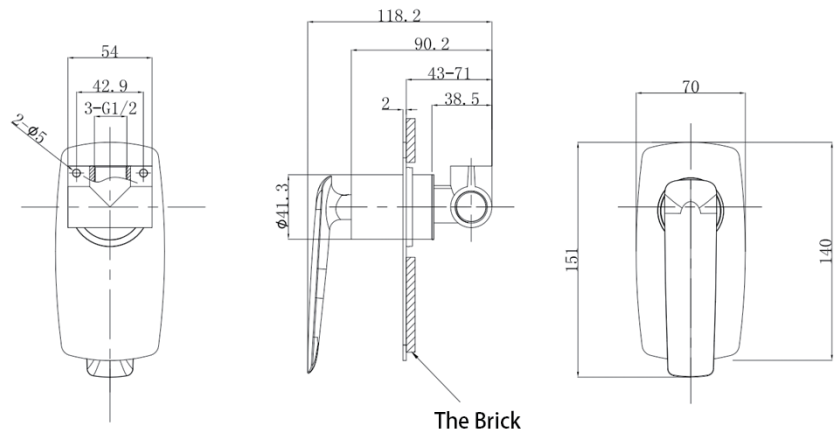
● WM205.05

RRP: \$179.00
Finish: Brushed Nickel



● WM205.06

RRP: \$199.00
Finish: Gun Metal Grey



Feature:
Material: Brass
Weight: 1.5kg
Package Size: 21.5*17.5*8.5cm



- WMD204.01

RRP: \$189.00
Finish: Chrome



● WMD204.02

RRP: \$199.00
Finish: Matte Black



● WMD204.04

RRP: \$249.00
Finish: Brushed Yellow Gold



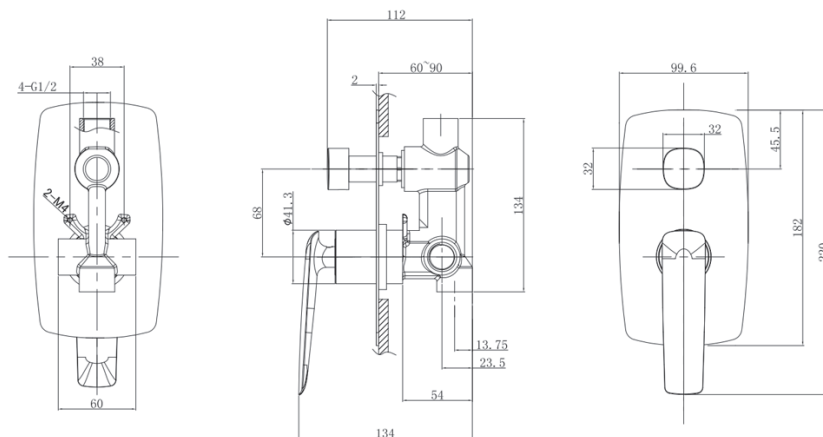
- WMD204.05

RRP: \$229.00
Finish: Brushed Nickel



● WMD204.06

RRP: \$249.00
Finish: Gun Metal Grey



Feature:
Material: Brass
Weight: 1.6kg
Package Size: 21.5*17.5*8.5cm



● SP203.01

RRP: \$79.00
Finish: Chrome



● SP203.02

RRP: \$89.00
Finish: Matte Black



● SP203.04

RRP: \$139.00
Finish: Brushed Yellow Gold



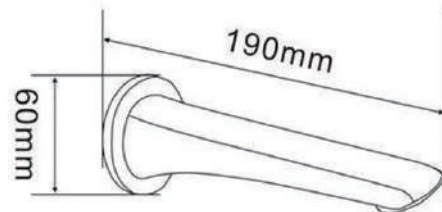
● SP203.05

RRP: \$119.00
Finish: Brushed Nickel



● SP203.06

RRP: \$139.00
Finish: Gun Metal Grey



Feature:
Material: Brass
Weight: 0.8kg
Package Size: 23*8*8cm



● SR49.01

RRP: \$159.00
Finish: Chrome



● SR49.02

RRP: \$229.00
Finish: Matte Black



● SR49.04

RRP: \$289.00
Finish: Brushed Yellow Gold



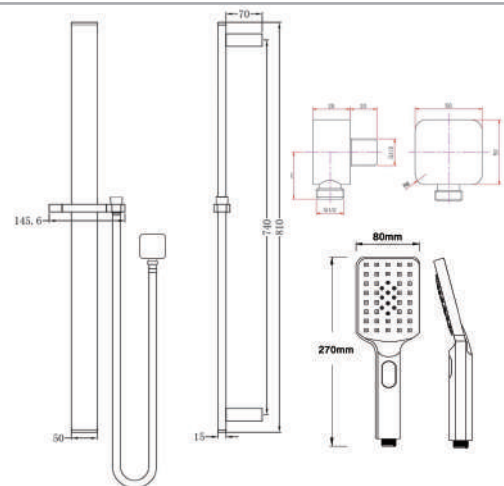
● SR49.05

RRP: \$259.00
Finish: Brushed Nickel



● SR49.06

RRP: \$289.00
Finish: Gun Metal Grey



Feature: Sliding Rail
Material: Stainless Steel&ABS
Weight: 3kg
Package Size: 70*23*6cm



Single Towel Rail 600mm

AR81.01--\$69.95

Feature:
Material: Zinc Alloy
Weight: 1.0kg
Package Size: 62*10*5cm



Single Towel Rail 800mm

AR81-8.01--\$79.95

Feature:
Material: Zinc Alloy
Weight: 1.2kg
Package Size: 84*15*5cm



Double Towel Rail 600mm

AR82.01--\$89.95

Feature:
Material: Zinc Alloy
Weight: 1.2kg
Package Size: 64*10*5cm



Double Towel Rail 800mm

AR82-8.01--\$109.95

Feature:
Material: Zinc Alloy
Weight: 1.3kg
Package Size: 84*15*10cm



Towel Rack 600mm

AR89.01--\$169.00

Feature:
Material: Zinc Alloy
Weight: 1.5kg
Package Size: 65*25*10cm



Glass Shower Shelf

AR814.01--\$89.95

Feature:
Material: Zinc Alloy
Weight: 1.2kg
Package Size: 60*15*10cm



Hand Towel Rail

AR83.01--\$39.95

Feature:
Material: Zinc Alloy
Weight: 0.6kg
Package Size: 25*10*8cm



Robe Hook

AR87.01--\$24.95

Feature:
Material: Zinc Alloy
Weight: 0.4kg
Package Size: 10*10*6cm



Toilet Roll Holder

AR813.01--\$29.95

Feature:
Material: Zinc Alloy
Weight: 0.5kg
Package Size: 20*15*8cm



Single Towel Rail 600mm

AR81.02--\$79.95

Feature:
Material: Zinc Alloy
Weight: 1.0kg
Package Size: 62*10*5cm



Single Towel Rail 800mm

AR81-8.02--\$89.95

Feature:
Material: Zinc Alloy
Weight: 1.2kg
Package Size: 84*15*5cm



Double Towel Rail 600mm

AR82.02--\$99.95

Feature:
Material: Zinc Alloy
Weight: 1.2kg
Package Size: 64*10*5cm



Double Towel Rail 800mm

AR82-8.02--\$119.95

Feature:
Material: Zinc Alloy
Weight: 1.3kg
Package Size: 84*15*10cm



Towel Rack 600mm

AR89.02--\$189.95

Feature:
Material: Zinc Alloy
Weight: 1.5kg
Package Size: 65*25*10cm



Glass Shower Shelf

AR814.02--\$99.95

Feature:
Material: Zinc Alloy
Weight: 1.2kg
Package Size: 60*15*10cm



Hand Towel Rail

AR83.02--\$44.95

Feature:
Material: Zinc Alloy
Weight: 0.6kg
Package Size: 25*10*8cm



Robe Hook

AR87.02--\$26.95

Feature:
Material: Zinc Alloy
Weight: 0.4kg
Package Size: 10*10*6cm



Toilet Roll Holder

AR813.02--\$34.95

Feature:
Material: Zinc Alloy
Weight: 0.5kg
Package Size: 20*15*8cm



Single Towel Rail 600mm

AR81.04--\$94.95

Feature:
Material: Zinc Alloy
Weight: 1.0kg
Package Size: 62*10*5cm



Single Towel Rail 800mm

AR81-8.04--\$99.95

Feature:
Material: Zinc Alloy
Weight: 1.2kg
Package Size: 84*15*5cm



Double Towel Rail 600mm

AR82.04--\$129.95

Feature:
Material: Zinc Alloy
Weight: 1.2kg
Package Size: 64*10*5cm



Double Towel Rail 800mm

AR82-8.04--\$139.95

Feature:
Material: Zinc Alloy
Weight: 1.3kg
Package Size: 84*15*10cm



Towel Rack 600mm

AR89.04--\$239.95

Feature:
Material: Zinc Alloy
Weight: 1.5kg
Package Size: 65*25*10cm



Glass Shower Shelf

AR814.04--\$124.95

Feature:
Material: Zinc Alloy
Weight: 1.2kg
Package Size: 60*15*10cm



Hand Towel Rail

AR83.04--\$59.95

Feature:
Material: Zinc Alloy
Weight: 0.6kg
Package Size: 25*10*8cm



Robe Hook

AR87.04--\$36.95

Feature:
Material: Zinc Alloy
Weight: 0.4kg
Package Size: 10*10*6cm



Toilet Roll Holder

AR813.04--\$49.95

Feature:
Material: Zinc Alloy
Weight: 0.5kg
Package Size: 20*15*8cm



Single Towel Rail 600mm

AR81.05--\$89.95

Feature:
Material: Zinc Alloy
Weight: 1.0kg
Package Size: 62*10*5cm



Single Towel Rail 800mm

AR81-8.05--\$94.95

Feature:
Material: Zinc Alloy
Weight: 1.2kg
Package Size: 84*15*5cm



Double Towel Rail 600mm

AR82.05--\$124.95

Feature:
Material: Zinc Alloy
Weight: 1.2kg
Package Size: 64*10*5cm



Double Towel Rail 800mm

AR82-8.05--\$132.95

Feature:
Material: Zinc Alloy
Weight: 1.3kg
Package Size: 84*15*10cm



Towel Rack 600mm

AR89.05--\$229.95

Feature:
Material: Zinc Alloy
Weight: 1.5kg
Package Size: 65*25*10cm



Glass Shower Shelf

AR814.05--\$119.95

Feature:
Material: Zinc Alloy
Weight: 1.2kg
Package Size: 60*15*10cm



Hand Towel Rail

AR83.05--\$54.95

Feature:
Material: Zinc Alloy
Weight: 0.6kg
Package Size: 25*10*8cm



Robe Hook

AR87.05--\$34.95

Feature:
Material: Zinc Alloy
Weight: 0.4kg
Package Size: 10*10*6cm



Toilet Roll Holder

AR813.05--\$45.95

Feature:
Material: Zinc Alloy
Weight: 0.5kg
Package Size: 20*15*8cm



Single Towel Rail 600mm

AR81.06--\$94.95

Feature:
Material: Zinc Alloy
Weight: 1.0kg
Package Size: 62*10*5cm



Single Towel Rail 800mm

AR81-8.06--\$99.95

Feature:
Material: Zinc Alloy
Weight: 1.2kg
Package Size: 84*15*5cm



Double Towel Rail 600mm

AR82.06--\$129.95

Feature:
Material: Zinc Alloy
Weight: 1.2kg
Package Size: 64*10*5cm



Double Towel Rail 800mm

AR82-8.06--\$139.95

Feature:
Material: Zinc Alloy
Weight: 1.3kg
Package Size: 84*15*10cm



Towel Rack 600mm

AR89.06--\$239.95

Feature:
Material: Zinc Alloy
Weight: 1.5kg
Package Size: 65*25*10cm



Glass Shower Shelf

AR814.06--\$124.95

Feature:
Material: Zinc Alloy
Weight: 1.2kg
Package Size: 60*15*10cm



Hand Towel Rail

AR83.06--\$59.95

Feature:
Material: Zinc Alloy
Weight: 0.6kg
Package Size: 25*10*8cm



Robe Hook

AR87.06--\$36.95

Feature:
Material: Zinc Alloy
Weight: 0.4kg
Package Size: 10*10*6cm



Toilet Roll Holder

AR813.06--\$49.95

Feature:
Material: Zinc Alloy
Weight: 0.5kg
Package Size: 20*15*8cm

● BT39.01

RRP: \$225.00
Finish: Chrome



● BT39.02

RRP: \$250.00
Finish: Matte Black



● BT39.04

RRP: \$289.00
Finish: Brushed Yellow Gold



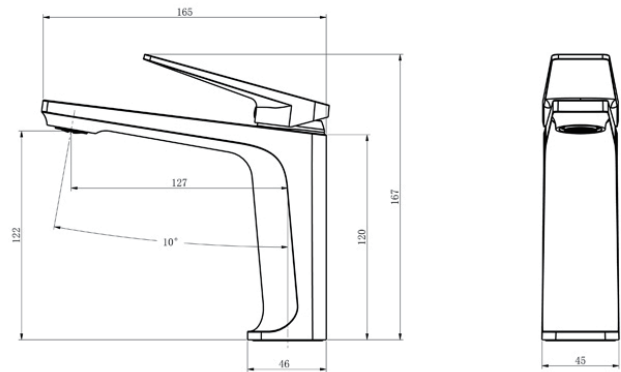
● BT39.05

RRP: \$269.00
Finish: Brushed Nickel



● BT39.06

RRP: \$289.00
Finish: Gun Metal Grey



Feature:
Material: Brass
Weight: 1.5kg
Package Size: 30*22.5*8.5cm

● TBT37.01

RRP: \$249.00
Finish: Chrome



● TBT37.02

RRP: \$295.00
Finish: Matte Black



● TBT37.04

RRP: \$359.00
Finish: Brushed Yellow Gold



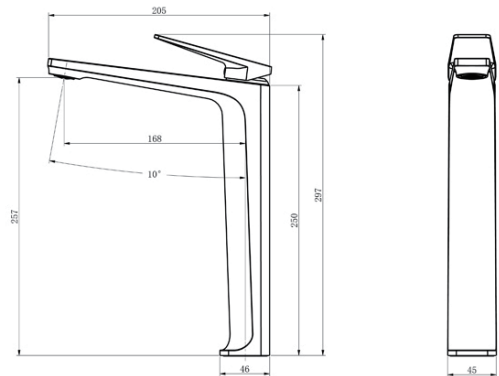
● TBT37.05

RRP: \$315.00
Finish: Brushed Nickel



● TBT37.06

RRP: \$359.00
Finish: Gun Metal Grey



Feature:

Material: Brass

Weight: 2.3kg

Package Size: 45.5*25*7.5cm

● **KT51.01**

RRP: \$249.00
Finish: Chrome



● **KT51.02**

RRP: \$315.00
Finish: Matte Black



● **KT51.04**

RRP: \$395.00
Finish: Brushed Yellow Gold



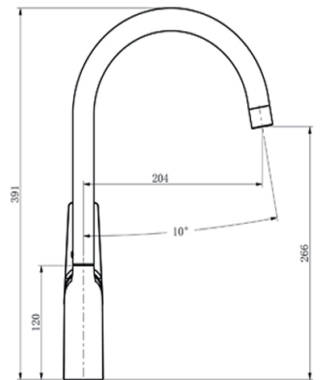
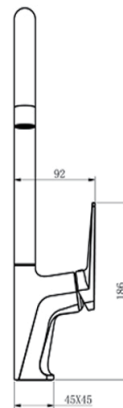
● **KT51.05**

RRP: \$379.00
Finish: Brushed Nickel



● **KT51.06**

RRP: \$395.00
Finish: Gun Metal Grey



Feature:

Material: Brass

Weight: 2.5kg

Package Size: 45*25*7.5cm

● BS01.01

RRP: \$299.00
Finish: Chrome



● BS01.02

RRP: \$349.00
Finish: Matte Black



● BS01.04

RRP: \$499.00
Finish: Brushed Yellow Gold



● BS01.05

RRP: \$399.00
Finish: Brushed Nickel

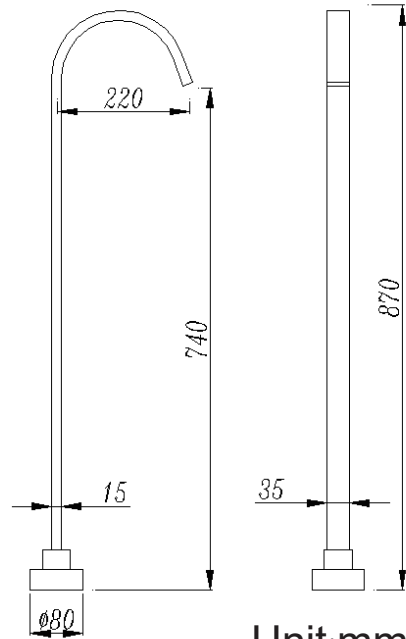


● BS01.06

RRP: \$499.00
Finish: Gun Metal Grey



Feature: Free Standing Spout
Material: Stainless Steel
Weight: 2kg
Package Size: 95*30*15cm



Unit:mm



Ultra-thin Shower Head 250/300mm

SR02.01/SR02.02--\$119.00/\$149.00
SR03.01/SR03.02--\$149.00/\$189.00

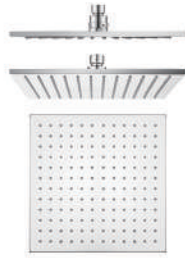
Feature:

Material: 304 Stainless Steel

Weight: 1.2kg/1.5kg

Package Size: 28*28*8cm

35*35*10cm



Shower Head 250mm

SR135.01 Chrome-\$139.00

SR135.02 Matte Black-\$159.00

SR135.04 Brushed Yellow Gold-\$199.00

SR135.05 Brushed Nickel-\$179.00

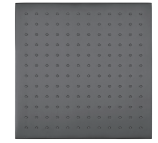
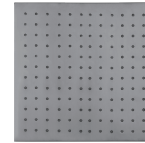
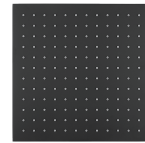
SR135.06 Gun Metal Grey-\$199.00

Feature:

Material: Solid Brass

Weight: 0.9kg

Package Size: 22*22*7cm



Wall Shower Arm

SE29.01 Chrome -\$79.00

SE29.02 Matte Black -\$89.00

SE29.04 Brushed Yellow Gold -\$119.00

SE29.05 Brushed Nickel -\$99.00

SE29.06 Gun Metal Grey -\$119.00

Feature:

Material: Brass

Weight: 0.6kg

Package Size: 40*40*10cm



Ceiling Shower Arm 200/400mm

SE03.01 Chrome -\$29.00

SE03.02 Matte Black -\$39.00

SE03.04 Brushed Yellow Gold -\$59.00

SE03.05 Brushed Nickel -\$49.00

SE03.06 Gun Metal Grey -\$59.00

SE17.01 Chrome -\$39.00

SE17.02 Matte Black -\$49.00

SE17.04 Brushed Yellow Gold -\$69.00

SE17.05 Brushed Nickel -\$59.00

SE17.06 Gun Metal Grey -\$69.00

Feature:

Material: Brass

Weight: 0.3/0.5kg

All prices include GST and are subject to change without notice.

Phone: (07) 4633 4445 Email: sales@norico.com.au

www.norico.com.au



Single Towel Rail 600mm

AR71.01--\$79.95

Feature:
Material: 304 Stainless Steel
Weight: 1.0kg
Package Size: 64*9.5*6cm



Single Towel Rail 800mm

AR71-8.01--\$94.95

Feature:
Material: 304 Stainless Steel
Weight: 1.3kg
Package Size: 82*9*9cm



Double Towel Rail 600mm

AR72.01--\$99.95

Feature:
Material: 304 Stainless Steel
Weight: 1.3kg
Package Size: 65*14*6cm



Double Towel Rail 800mm

AR72-8.01--\$109.95

Feature:
Material: 304 Stainless Steel
Weight: 1.6kg
Package Size: 82*14*5.5cm



Hand Towel Rail 255mm

AR73.01--\$49.95

Feature:
Material: 304 Stainless Steel
Weight: 0.5kg
Package Size: 30*10*8cm



Soap Dish

AR76.01--\$49.95

Feature:
Material: 304 Stainless Steel
Weight: 0.4kg
Package Size: 17*13*9cm



Robe Hook

AR77.01--\$24.95

Feature:
Material: 304 Stainless Steel
Weight: 0.2kg
Package Size: 9*8*6.5cm



Toilet Roll Holder

AR78.01--\$39.95

Feature:
Material: 304 Stainless Steel
Weight: 0.3kg
Package Size: 21*9.5*7cm

Chrome



Single Towel Rail 600mm

AR71.02--\$89.95

Feature:
Material: 304 Stainless Steel
Weight: 1.0kg
Package Size: 64*9.5*6cm



Single Towel Rail 800mm

AR71-8.02--\$109.95

Feature:
Material: 304 Stainless Steel
Weight: 1.3kg
Package Size: 82*9*9cm



Double Towel Rail 600mm

AR72.02--\$109.95

Feature:
Material: 304 Stainless Steel
Weight: 1.3kg
Package Size: 65*14*6cm



Double Towel Rail 800mm

AR72-8.02--\$129.95

Feature:
Material: 304 Stainless Steel
Weight: 1.6kg
Package Size: 82*14*5.5cm



Hand Towel Rail 255mm

AR73.02--\$54.95

Feature:
Material: 304 Stainless Steel
Weight: 0.5kg
Package Size: 30*10*8cm



Soap Dish

AR76.02--\$54.95

Feature:
Material: 304 Stainless Steel
Weight: 0.4kg
Package Size: 17*13*9cm



Robe Hook

AR77.02--\$34.95

Feature:
Material: 304 Stainless Steel
Weight: 0.2kg
Package Size: 9*8*6.5cm



Toilet Roll Holder

AR78.02--\$49.95

Feature:
Material: 304 Stainless Steel
Weight: 0.3kg
Package Size: 21*9.5*7cm

Black



Single Towel Rail 600mm

AR71.04--\$139.95

Feature:
Material: 304 Stainless Steel
Weight: 1.0kg
Package Size: 64*9.5*6cm



Single Towel Rail 800mm

AR71-8.04--\$149.95

Feature:
Material: 304 Stainless Steel
Weight: 1.3kg
Package Size: 82*9*9cm



Double Towel Rail 600mm

AR72.04--\$149.95

Feature:
Material: 304 Stainless Steel
Weight: 1.3kg
Package Size: 65*14*6cm



Double Towel Rail 800mm

AR72-8.04--\$169.95

Feature:
Material: 304 Stainless Steel
Weight: 1.6kg
Package Size: 82*14*5.5cm



Hand Towel Rail 255mm

AR73.04--\$74.95

Feature:
Material: 304 Stainless Steel
Weight: 0.5kg
Package Size: 30*10*8cm



Soap Dish

AR76.04--\$74.95

Feature:
Material: 304 Stainless Steel
Weight: 0.4kg
Package Size: 17*13*9cm



Robe Hook

AR77.04--\$44.95

Feature:
Material: 304 Stainless Steel
Weight: 0.2kg
Package Size: 9*8*6.5cm



Toilet Roll Holder

AR78.04--\$69.95

Feature:
Material: 304 Stainless Steel
Weight: 0.3kg
Package Size: 21*9.5*7cm

Brushed Yellow Gold



Single Towel Rail 600mm

AR71.05--\$109.95

Feature:
Material: 304 Stainless Steel
Weight: 1.0kg
Package Size: 64*9.5*6cm



Single Towel Rail 800mm

AR71-8.05--\$129.95

Feature:
Material: 304 Stainless Steel
Weight: 1.3kg
Package Size: 82*9*9cm



Double Towel Rail 600mm

AR72.05--\$129.95

Feature:
Material: 304 Stainless Steel
Weight: 1.3kg
Package Size: 65*14*6cm



Double Towel Rail 800mm

AR72-8.05--\$149.95

Feature:
Material: 304 Stainless Steel
Weight: 1.6kg
Package Size: 82*14*5.5cm



Hand Towel Rail 255mm

AR73.05--\$69.95

Feature:
Material: 304 Stainless Steel
Weight: 0.5kg
Package Size:30*10*8cm



Soap Dish

AR76.05--\$69.95

Feature:
Material: 304 Stainless Steel
Weight: 0.4kg
Package Size: 17*13*9m



Robe Hook

AR77.05--\$39.95

Feature:
Material: 304 Stainless Steel
Weight: 0.2kg
Package Size:9*8*6.5cm



Toilet Roll Holder

AR78.05--\$59.95

Feature:
Material: 304 Stainless Steel
Weight: 0.3kg
Package Size:21*9.5*7cm

Brushed Nickel



Single Towel Rail 600mm

AR71.06--\$139.95

Feature:
Material: 304 Stainless Steel
Weight: 1.0kg
Package Size: 64*9.5*6cm



Single Towel Rail 800mm

AR71-8.06--\$149.95

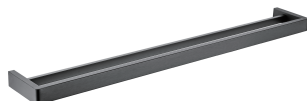
Feature:
Material: 304 Stainless Steel
Weight: 1.3kg
Package Size: 82*9*9cm



Double Towel Rail 600mm

AR72.06--\$149.95

Feature:
Material: 304 Stainless Steel
Weight: 1.3kg
Package Size: 65*14*6cm



Double Towel Rail 800mm

AR72-8.06--\$169.95

Feature:
Material: 304 Stainless Steel
Weight: 1.6kg
Package Size: 82*14*5.5cm



Hand Towel Rail 255mm

AR73.06--\$74.95

Feature:
Material: 304 Stainless Steel
Weight: 0.5kg
Package Size: 30*10*8cm



Soap Dish

AR76.06--\$74.95

Feature:
Material: 304 Stainless Steel
Weight: 0.4kg
Package Size: 17*13*9cm



Robe Hook

AR77.06--\$44.95

Feature:
Material: 304 Stainless Steel
Weight: 0.2kg
Package Size: 9*8*6.5cm



Toilet Roll Holder

AR78.06--\$69.95

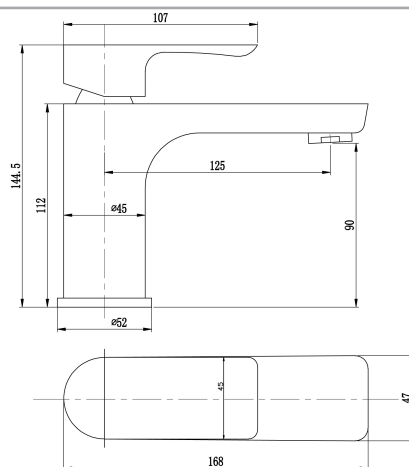
Feature:
Material: 304 Stainless Steel
Weight: 0.3kg
Package Size: 21*9.5*7cm

Gun Metal Grey



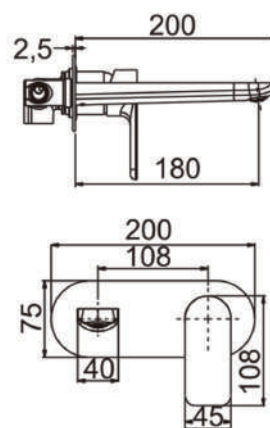
● BT31.01-\$149.00/BT31.02-\$169.00

Finish: Chrome / Matte Black / White



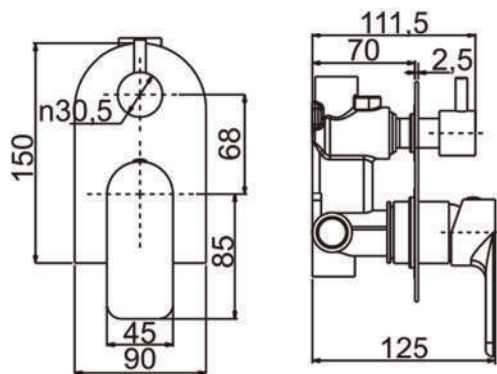
● WMT54.01-\$179.00 / WMT54.02-\$199.00

Finish: Chrome / Matte Black



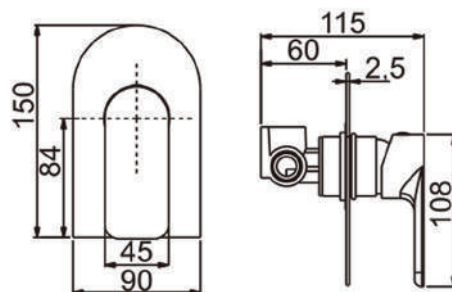
● WMD62.01-\$149.00 / WMD62.02-\$169.00

Finish: Chrome / Matte Black

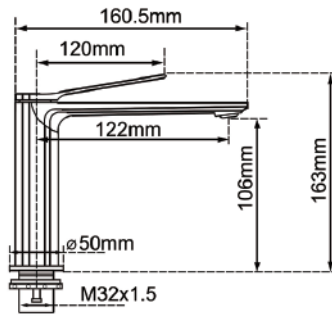


● WM63.01-\$109.00 / WMD63.02-\$139.00

Finish: Chrome / Matte Black



Rushy series tapware (available to order through Norico for Queensland customers only)

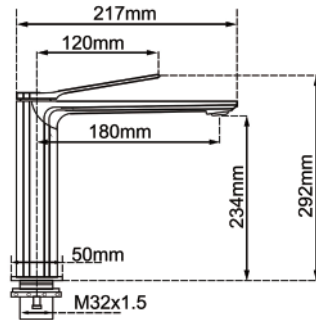


● CH0128.BM/OX0128.BM
BUGM0128.BM/BU0128.BM

RRP: \$169.00/\$219.00/\$439.00/\$349.00

Finish:
Brushed Gunmetal Grey/Brushed Nickel
Material: Brass
Weight: 1.25kg
Package Size: 29*22*8cm

Basin Mixer

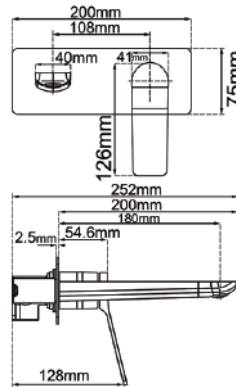


● CH0149.BM/OX0149.BM
BUGM0149.BM/BU0149.BM

RRP: \$249.00/\$299.00/\$499.00/\$429.00

Finish: Chrome/Matte Black
Brushed Gunmetal Grey/Brushed Nickel
Material: Brass
Weight: 2.0kg
Package Size: 44*21*8cm

Tall Basin Mixer

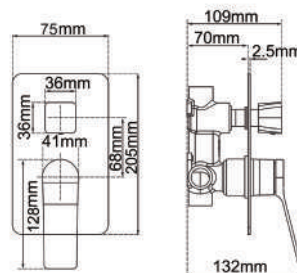


● CH0153.BM/OX0153.BM
BUGM0153.BM/BU0153.BM

RRP: \$229.00/\$279.00/\$429.00/\$399.00

Finish: Chrome/Matte Black
Brushed Gunmetal Grey/Brushed Nickel
Material: Brass
Weight: 2.0kg
Package Size: 29.5*22*8cm

Wall Mixer with Spout



● CH0155.ST/OX0155.ST
BUGM0155.ST/BU0155.ST

RRP: \$179.00/\$219.00/\$399.00/\$299.00

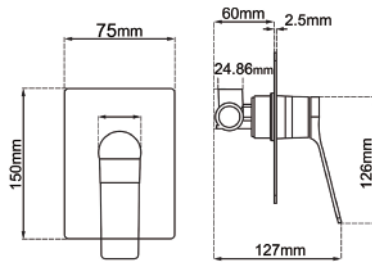
Finish: Chrome/Matte Black
Brushed Gunmetal Grey/Brushed Nickel
Material: Brass
Weight: 1.75kg
Package Size: 23*17*11cm

Wall Mixer with Diverter

All prices include GST and are subject to change without notice.
Phone: (07) 4633 4445 Email: sales@norico.com.au

www.norico.com.au

Rushy series tapwares (available to order through Norico for Queensland customers only)

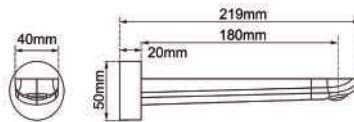


● CH0156.ST/OX0156.ST
BUGM0156.ST/BU0156.ST

RRP: \$139.00/\$159.00/\$199.00/\$169.00

Finish: Chrome/Matte Black
Brushed Gunmetal Grey/Brushed Nickel
Material: Brass
Weight: 0.6kg
Package Size: 24*7*6.5cm

Wall Mixer



● CH0015.BS/OX0015.BS
BUGM0015.BS/BU0015.BS

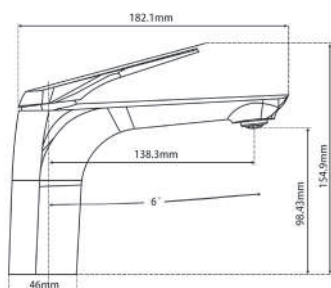
RRP: \$139.00/\$159.00/\$199.00/\$169.00

Finish: Chrome/Matte Black
Brushed Gunmetal Grey/Brushed Nickel
Material: Brass
Weight: 0.6kg
Package Size: 24*7*6.5cm

Wall Spout

AU series tapwares (available to order through Norico for Queensland customers only)

● CH0161.BM/OX0161.BM

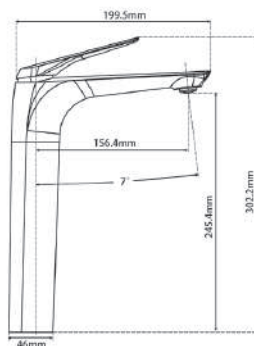


RRP: \$189.00/\$219.00

Finish: Chrome/Matte Black
Material: Brass

Basin Mixer

● CH0160.BM/OX0160.BM

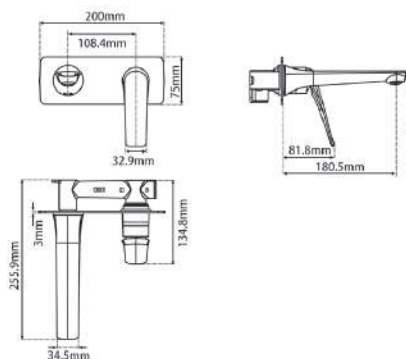


RRP: \$259.00/\$299.00

Finish: Chrome/Matte Black
Material: Brass

Tall Basin Mixer

● CH0159.BM/OX0159.BM

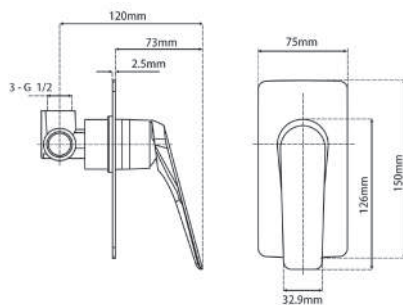


RRP: \$319.00/\$369.00

Finish: Chrome/Matte Black
Material: Brass

Wall Mixer with Spout

● CH0166.ST/OX0166.ST



RRP: \$199.00/\$219.00

Finish: Chrome/Matte Black
Material: Brass

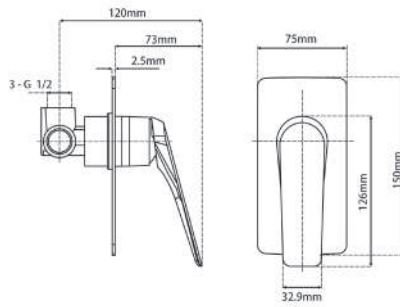
Wall Mixer with Diverter

All prices include GST and are subject to change without notice.
Phone: (07) 4633 4445 Email: sales@norico.com.au

www.norico.com.au

AU series tapwares (available to order through Norico for Queensland customers only)

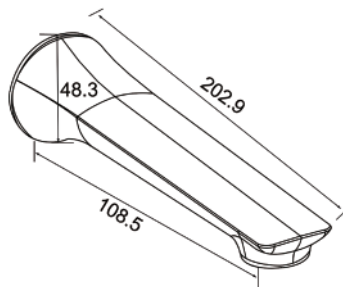
● CH0164.ST/OX0164.ST



RRP: \$129.00/\$149.00

Finish: Chrome/Matte Black
Material: Brass

Wall Mixer



● CH0016.BS/OX0016.BS

RRP: \$109.00/\$129.00

Finish: Chrome/Matte Black
Material: Brass

Wall Spout



BT01.01 Chrome--\$89.00



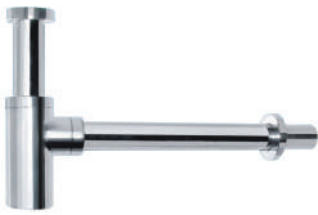
BT01.02 Matte Black--\$129.00



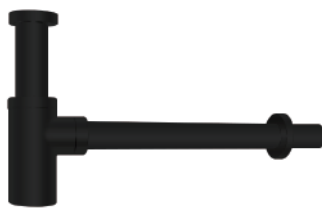
BT01.05 Brushed Nickel--\$179.00



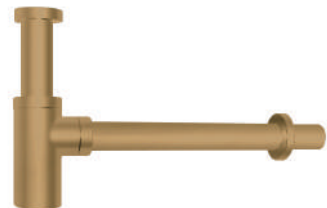
BT01.06 Gun Metal Grey--\$179.00



BT02.01 Chrome--\$89.00



BT02.02 Matte Black--\$129.00



BT02.04 Brushed Yellow Gold--\$179.00

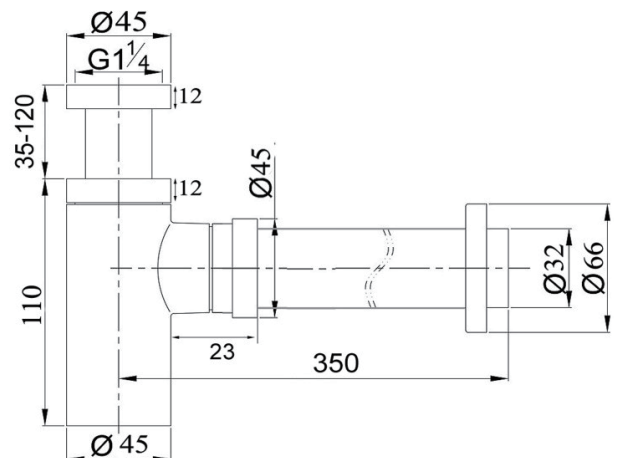


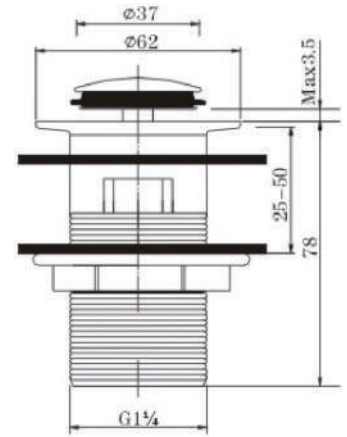
BT02.05 Brushed Nickel--\$179.00



BT02.06 Gun Metal Grey--\$179.00

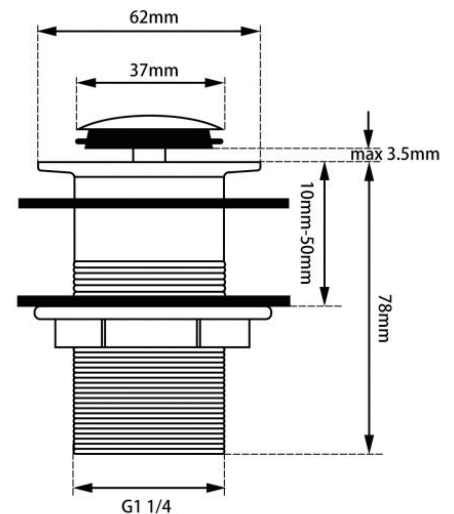
Feature: Square / Round Bottle Trap
Material: Brass
Weight: 1kg
Package Size: 40*15*8cm





- PW01.01 Chrome--\$18.00
- PW01.02 Matte Black--\$30.00
- PW01.04 Brushed Yellow Gold--\$60.00
- PW01.05 Brushed Nickel--\$50.00
- PW01.06 Gun Metal Grey--\$60.00

Feature:Pop Up Waste with Overflow
 Material:Brass
 Weight:0.5kg
 Package Size:10*8*8cm



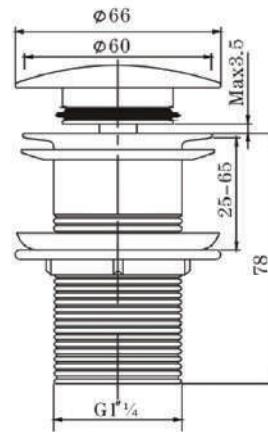
- PW02.01 Chrome--\$18.00
- PW02.02 Matte Black--\$30.00
- PW02.04 Brushed Yellow Gold--\$60.00
- PW02.05 Brushed Nickel--\$50.00
- PW02.06 Gun Metal Grey--\$60.00

Feature:Pop Up Waste without Overflow
 Material:Brass
 Weight:0.5kg
 Package Size:10*8*8cm



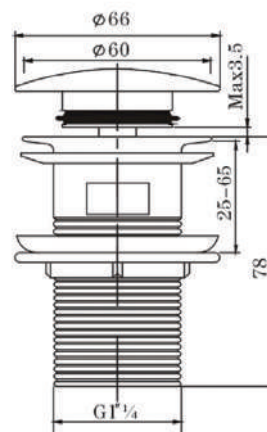
- PW03.01 Chrome--\$29.00
- PW03.02 Matte Black--\$39.00
- PW03.04 Brushed Yellow Gold--\$49.00
- PW03.05 Brushed Nickel--\$44.00
- PW03.06 Gun Metal Grey--\$49.00

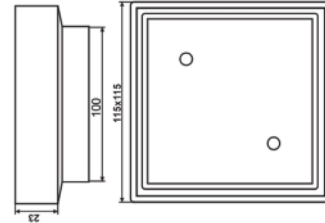
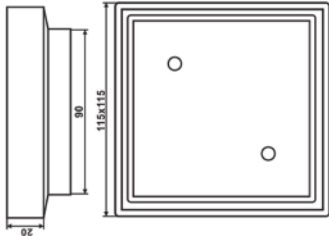
Feature:Pop Up Waste without Overflow
 Material:Brass
 Weight:0.5kg
 Package Size:10*8*8cm



- PW04.01 Chrome--\$29.00
- PW04.02 Matte Black--\$39.00
- PW04.04 Brushed Yellow Gold--\$49.00
- PW04.05 Brushed Nickel--\$44.00
- PW04.06 Gun Metal Grey--\$49.00

Feature:Pop Up Waste with Overflow
 Material:Brass
 Weight:0.5kg
 Package Size:10*8*8cm



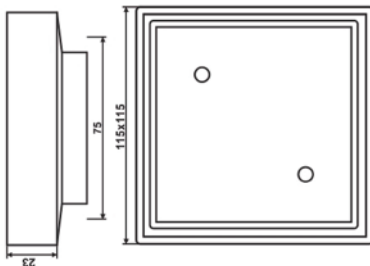


- CH002.FD Chrome--\$64.00
- OX002.FD Matte Black--\$69.00

Feature: 90mm Outlet
Material: Brass

- CH005.FD Chrome--\$64.00
- OX005.FD Matte Black--\$69.00

Feature: 100mm Outlet
Material: Brass



- CH006.FD Chrome--\$50.00
- OX006.FD Matte Black--\$69.00

Feature: 73.8mm Outlet
Material: Brass

Warranty

Norico Australia Pty Ltd ABN 97 620 318 872 is responsible for warranties.

Norico Australia Pty Ltd Care+Cleaning Instructions

- Under no circumstances should tapware and accessories be installed using silicone or acetone products.
- Never use harsh detergents or acids, citrus based cleaner, or abrasive cleaners on any products, as these will scratch the surface.
- Where the tapware and accessories are in dry areas, use a soft cloth to remove surface dust. Alternatively, a wipe over with warm soapy water is all that is required to maintain the finish.
- Use of wax-based furniture cream should be avoided as these can result in a build up of deposits, which could detract the appearance.
- Do not store oxidising chemicals inside vanity cabinets or under sinks (it can cause mixer hoses to burst).

Australian Consumer Law

Our products come with guarantees that cannot be excluded under the Australian Consumer Law. You are entitled to a replacement or refund for a major failure and compensation for any other reasonably foreseeable loss or damage. You are also entitled to have the goods repaired or replaced if the goods fail to be of acceptable quality and the failure does not amount to a major failure.

Warranty can be made through:-

(a) Norico Australia Pty Ltd or one of its main offices in Australia, or through approved distributors of Norico Australia Pty Ltd Products.

(b) An approved distributor (This will be where you bought your product).

All goods are to be checked within 48 hours of being received. Any claim for shortages and /or breakages will be waived if you do not lodge a claim in writing to sales@norico.com.au within 48 hours of receiving goods. Claims for shortages or damages will not be recognised if deliveries are made by a third party organised by the retailer.

Goods returned due to change of mind or cancelled orders will incur a 20% restocking fee. It is the responsibility and expense of the buyer to arrange the return of the product to Norico Australia Pty Ltd. Goods returned must be in original packaging and in saleable condition for credit to be applied. Norico Australia Pty Ltd reserves the right to refuse returns on specialised orders.

Warranty Periods

In addition, available to you under the law, Norico Australia Pty Ltd will provide from the date of purchase of the product:-

- (a) The product you receive is of good quality regarding the manufacturing.
- (b) The finish of the product is of good quality and is of consistent colour.
- (c) When the product contains a cartridge, aerator or water restrictor, warranty will only repair the part that is deemed defective after the first 12 months from date of receipt of purchase. After 12 months the removal and installation of the repaired part or replacement part will not be the responsibility of Norico Australia Pty Ltd.
- (d) Where Norico Australia Pty Ltd repairs or replaces a part or product this will not start a new warranty period. The remainder of the products initial warranty term will apply.
- (e) All chrome tapware has a warranty period including the finish for 7 years.
- (f) All other finishes come with a conditional 12 month warranty as stated in this warranty.

Warranty Exclusions

Subject to Australian Consumer Law:-

- (a) Warranty will not apply to any product that has been sold from a display or used as a display product from any retailer and or authorised distributor.
- (b) When Norico Australia Pty Ltd did not sell the product to an authorised distributor and the proof of purchase is not of the authorised distributor or reseller.
- (c) The Consumer is not able to provide proof of purchase from the authorised distributor or reseller or is not the original owner as the warranty is not transferrable.
- (d) Products are not installed by a licenced plumber, or a person qualified to do the work required.
- (e) Products are not installed as per the guideline and or the installation manuals.
- (f) Damage to the relevant product is caused by accident, abuse, misuse, maltreatment, negligent use, improper or unusual installation, installation by accredited and licenced service provider or technician, abnormal stress or strain, unusual physical or environmental conditions, or neglect of any kind of the relevant products.
- (g) Water pressures exceed stated limitations as per the product installation instructions; (A) Note: AS/NZA 3500.1-2003

15 ★★★★★
15 YEAR WARRANTY

All prices include GST and are subject to change without notice.

Phone: (07) 4633 4445 Email: sales@norico.com.au

www.norico.com.au



- (Clause 3.3.4) specifies 150kPa minimum and 500kPa maximum water supply pressure at any outlet within a building for new installations; (B) Note: The 150KPA minimum and 500kPa maximum water supply pressure does not apply to fire service outlets.
- (h)The product is installed outside where it is open to salt or dust corrosion unless stated in a written warranty from Norico Australia at time of purchase.
- (i)Repair or replacement works have been undertaken on the relevant product without prior approval by Norico Australia, or works are undertaken by a non-approved service provider before written approval has been given.
- (j)Water flow regulators or non-approved parts connected to any part of the product.
- (k)Damage to the product due to not using approved cleaning methods.
- (l)Damage caused by cleaning with inappropriate cleaning products.
- (m)Damage to the relevant product is from fair wear and tear, including but not limited to: (A) working seals in the inlet and outlet valves; (B) abrasions from regular use; (C) discolouration from regular use; (D) fading from light exposure.
- (n)Damage caused by salt water or proximity to salt water and or fading caused by salt water.
- (o)Any modifications made to any product.
- (p)Damage to the relevant product is as a result of obstructions due to inadequate flushing of system before use, or problems caused by water supply (including silt, thread tape, silicone, copper shavings, corrosion and excess water pressure).
- (q)Damage to products is caused by harsh detergents or abrasive cleaners.
- (r)Flow regulators in tapware or showers, or regulated check valves in hand showers are removed or not installed.
- (s)The manufacturers' care and maintenance instructions in relation to the relevant product are not observed.
- (t)Tank water must have a water filter installed between the water tank and the first intake of the building which supplies water to the complete building.
- (u)Where a product fails, and leaks water and the water supply cannot or is not immediately shut off at the isolation cock or cocks and is turned back on before all the service work is completed.
- (v)Claims where a ceramic cartridge is included in the products, the product has malfunctioned due to the presence in the water supply of: (A) copper tube pieces; (B) sand, dirt or stones; (C) thread tape, or (D) other objects not normally presented in potable water supplies.
- (w)Claims from waterproofing membranes to the product without using the correct protection under the Australian Standard AS3740-1994 set for waterproofing and would have not occurred if this standard was met.

Responsibilities

On receiving delivery of the product, it is the Consumers responsibility to ensure:-

- (a) the product is not damaged prior to installation.
- (b) the Consumer is happy with their purchase.
- (c) the product has all its components and are included in the packaging; and
- (d) installation and required and appropriate maintenance is performed by a suitably qualified tradesperson.
- (e) the package or box is in good condition and the contents has not been tampered with or replaced.

Warranty Claims

If a Consumer makes a valid claim under the Warranty Exclusions (above) and none of the exclusions set out in the above, Norico Australia Pty Ltd will, at its discretion:

- (a)repair the relevant part of the product; or
- (b)replace the relevant part of the product with a product of identical specification, or where the product is superseded or no longer in stock, with a product of as close a specification as possible free of charge.
- (c)Products presented for repair may be replaced by refurbished products of the same type rather than being repaired. Refurbished parts may be used to repair the products.

Service Fee

- a) To the extent permitted by law, and subject to your rights under the Australian Consumer Law, Norico Australia Pty Ltd will not be liable for any costs associated with the removal of any faulty product or part from any connection, fitting or otherwise, or the installation of any replacement product or part.
- (b) Norico Australia Pty Ltd will not be liable for any claims for labour, additional products or parts associated with an alleged faulty product for repair work not approved in advance by Norico Australia Pty Ltd in writing. Norico Australia Pty Ltd requires adequate access to products, fittings and fixtures to undertake warranty repairs. Norico Australia Pty Ltd will not be responsible for any damage or costs (including consequential damage or costs) where adequate access to product fittings and fixtures is not accessible.

15 ★★★★★
15 YEAR WARRANTY

All prices include GST and are subject to change without notice.

Phone: (07) 4633 4445 Email: sales@norico.com.au

www.norico.com.au



(c) Should any warranty claim be made and attended to by Norico Australia Pty Ltd or a Norico Australia Pty Ltd authorised service provider, and in the opinion of Norico Australia Pty Ltd or the service provider (a fully qualified plumber), the problem was from:-

- (i) faulty installation;
 - (ii) use of the products in conjunction with products of another manufacturer; or
 - (iii) damage caused subject to the warranty exclusions set out at Warranty Exclusions (above), Norico Australia Pty Ltd reserves the right to charge a service fee for each service provider or Norico Australia Pty Ltd staff member attending the premises where products have been installed.
- (a) If Norico Australia Pty Ltd is asked to see a product that has been damaged or because of coatings that the customer believe have failed, the product, or part of the product will be sent to a Metal Lab for testing. Once the test results are concluded, and a report has been given to both Norico Australia Pty Ltd, the customer and the retailer that sold the product then:-

- (1) Norico Australia Pty Ltd will replace the product if found that their test has no Warranty Exclusions (above) found.
- (2) Norico Australia Pty Ltd will also pay for the test of the product to any metal lab it sends the product to.
- (3) If found that the test shows the product has failed under the fault of all the provisions under Warranty Exclusions, which include harsh chemicals, acids, silicones as set out in Warranty Exclusions (above), the test must be paid for by the person or persons that have asked for that said test to be carried out.

Consequential Loss

To the extent permitted by law, and subject to your rights under the Australian Consumer Law, Norico Australia Pty Ltd will not be liable to the Consumer for any loss, damage, injuries, actions, claims, costs or expenses arising out of the use of or reliance on the product, including but not limited to any loss or damage to furniture, floor coverings, walls, fixtures or any other reasonably foreseeable consequential loss of any kind caused by any defect in the products or their components. Consequential loss also covers any indirect loss, loss of use, loss of profits, funding or revenue, loss or reputation or goodwill, business interruption, increased operating costs or expenses, any special or indirect loss, and exemplary or punitive damages.

Faulty Product

Do not install the product if you believe the product is faulty in any way. If it is missing parts and not complete in the packaging, please do not install the product. If the product has been installed and a fault has occurred, turn off all water supply to the product. If the product has pressured water turn the water off at the point before the tap and cease using the product. Contact either of the below branches so a service form can be arranged. You can receive a claim form from below distributors or your local retailer where the product was purchased from.

QLD Headoffice:
2/1 Tradewinds Court
Glenvale QLD 4350
Ph: 07 4633 4445

NSW Branch:
342 Chisholm Road
Auburn NSW 2144
Ph: 02 7801 4938
Mob: 0422334499

VIC Branch:
182-184 Hammond Rd
Dandee South, VIC 3175
Ph: 03 8712 1098

Once the consumer receives the claim form, please fill it in and email to sales@norico.com.au Providing:-

- (a) the name and model of the product.
 - (b) proof of purchase from retailer is necessary to claim, and retailers' proof of purchase (if required).
 - (c) a photo / video and description of the fault in question.
 - (d) handover documentation for new homes (if applicable); and
 - (e) proof of installation by a licensed plumber (if applicable) and / or proof of purchase
- If the product has not been installed, please return it to the retailer you purchased the product from.

Warranty Period

*15 years replacement cartridges

*1 year replacement product or parts & labour

- All Norico Australia Pty Ltd products have a 12 month Commercial warranty. All products should be tested before handover date and apply from the date of invoicing.

15 ★★★★★
15 YEAR WARRANTY

All prices include GST and are subject to change without notice.

Phone: (07) 4633 4445 Email: sales@norico.com.au

www.norico.com.au



Head Office:Unit 2/1 Tradewinds Count,Glenvale,QLD 4350,Australia / Phone:07 4633 4445

Brisbane Warehouse:Unit 2/1 Tradewinds Count,Glenvale,QLD 4350,Australia

Sydney Warehouse:342 Chisholm Rd,Auburn NSW 2144,Australia

Melbourne Warehouse:77 Edtion Road,Dandenong South,VIC 3175,Australia